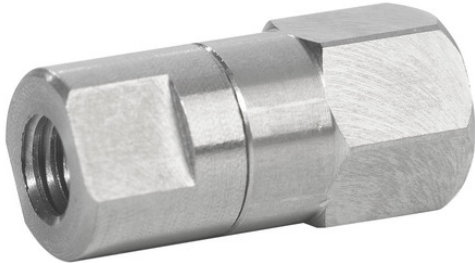




## Precision Jeweled Orifice Fittings



With tolerances of  $\pm 0.0001$ " (0.0025 mm), Clippard's precision orifice fittings are engineered for applications where minute flow adjustments are critical. Whether optimizing fuel injection in aerospace applications or fine-tuning fluid dynamics in industrial processes, or ensuring precise dosages in medical, analytical, and life science applications, these meticulously manufactured orifice fittings enable you to achieve the ultra-precise flow control your systems demand.

<b>Data Sheet</b>	<a href="#">Data Sheet</a> (includes 2D drawings)
<b>Filtration</b>	5 micron (recommended)
<b>Included Items</b>	Captivated O-Ring
<b>Material, Wetted</b>	Stainless Steel, FKM and Ruby or Sapphire
<b>Max PSI</b>	300 psig
<b>Medium</b>	Air, Liquid & Compatible Gases
<b>Operating Temperature Range</b>	-20 to 400°F (-29 to 204°C)
<b>Product Line Brochure</b>	<a href="#">Spider Technology</a>
<b>Tolerance</b>	$\pm 0.0001$ " (0.0025 mm)

