



Minature Push Button Actuators

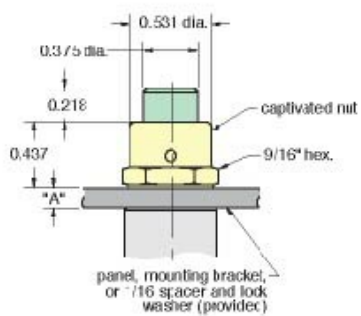
PC-2G



Capitivated push buttons are commonly used as limit valves in conjunction with any variety of mechanical actuators. The rugged design coupled with precise actuation of stem-operated valves make it perfect for applications where repetitive cycling of the valve is necessary.

Captivated push buttons can be used on individual stem-operated valves or in panel mount applications by omitting the 1/16" spacer. These buttons are available in a variety of colors, allowing you to color code and easily differentiate between valves when designing control systems.

Color	Green
Material, Body	Brass
Product Line Brochure	Mechanical Valves
Valve Stem Diameter	3/16"
Weight (lbs.)	0.0200



Spacing Required for Proper Actuation of Push Button

Clippard Valve	"A" Dim.
HV-4	3/32"
MAV-2, MAV-3	
MAVO-2, MAVO-3	
MAV-4, MAV-4D	5/32"
MJV-4, MJV-4D	
FV-3, FV-4, FV-5	7/32"
GV-3, GV-4	
MJV-2, MJV-3	
MJVO-2, MJVO-3	