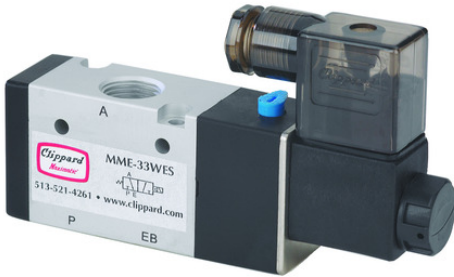
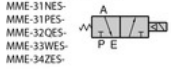


MME-32QES-D110



1/4" NPT 3-Way Solenoid Valve, 110 VAC DIN

Single-Solenoid Valves



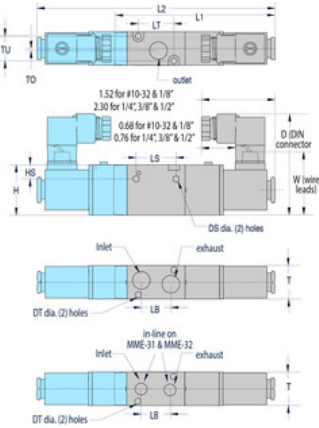
- MME-31NES-
- MME-31PES-
- MME-32QES-
- MME-33WES-
- MME-34ZES-

Double-Solenoid Valves



- MME-31NEE-
- MME-31PEE-
- MME-32QEE-
- MME-33WEE-
- MME-34ZEE-

Dim.	MME-31	MME-32	MME-33	MME-34
D	2.14	2.65	2.71	2.94
DS	0.13	0.17	0.17	0.22
DT	0.13	0.13	0.17	0.17
H	1.07	1.38	1.58	1.97
HS	0.30	0.31	0.41	0.53
L1	3.38	4.32	4.70	5.39
L2	5.02	6.56	6.76	7.55
LB (NES)	0.56	0.89	0.94	1.42
LB (PES)	0.63	0.89	0.94	1.42
LS	0.83	0.98	1.18	2.01
LT	0.75	1.18	1.37	1.61
T	0.71	0.87	1.06	1.34
TO	0.06	0.06	0.16	0.16
TU	0.50	0.65	0.80	1.07
W	1.32	1.51	1.54	1.73



Clippard

