

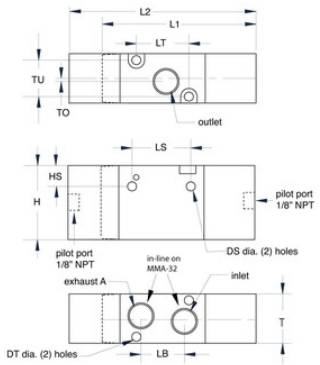
Clippard

MMA-34ZAA



1/2" 3-Way Double Air Pilot Valve

Air Flow	2600 l/min @ 50 psig; 4800 l/min @ 100 psig
Max PSI	125 psig
Medium	Air
Mount	Body Ported, Manifold Mount
Seals	Nitrile
Temperature Range	32 to 150°F



Dim.	MMA-31	MMA-32	MMA-33	MMA-34
DS	0.13	0.17	0.17	0.17
DT	0.13	0.13	0.17	0.17
H	1.06	1.38	1.57	1.97
HS	0.30	0.33	0.40	0.53
L1	2.24	2.92	3.17	3.72
L2	2.72	3.50	3.78	4.19
LB	0.53	0.89	0.94	1.24
LS	0.83	0.98	1.18	1.77
LT	0.75	1.18	1.38	1.59
T	0.71	0.87	1.06	1.34
TO	0.04	0.06	0.08	0.08
TU	0.51	0.67	0.79	1.06