



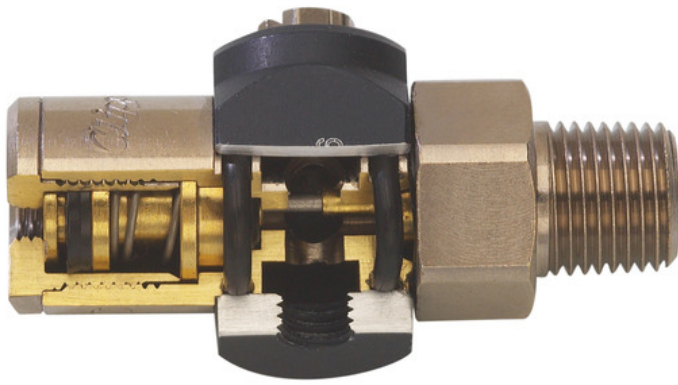
Pilot-Operated #10-32 & 1/8" NPT Valves

JPC-2NLN



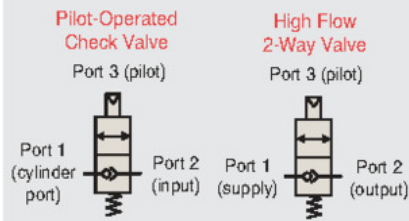
Pilot-operated check valves work as standard check valves but can be opened with an air pilot signal to permit free flow in the normally "checked" direction. This provides the user with a reliable method to check flow in one direction with the ability to remotely signal a free flow through the valve. The JPC Series all-in-one pilot-operated check valves are easy to connect and ideal for any circuit that might benefit from this useful function.

Input PSI	300 psig (21 bar) max.
Length	1.376
Material, Body	ENP Brass, Anodized Aluminum, Stainless Steel
Material, Seals	Nitrile
Medium	Air, Water & Oil
Mount	Direct
Operating Temperature Range	32 to 230°F (0 to 110°C)
Ports	#10-32, #10-32, #10-32
Product Line Brochure	Mechanical Valves
Weight (lbs.)	0.0800

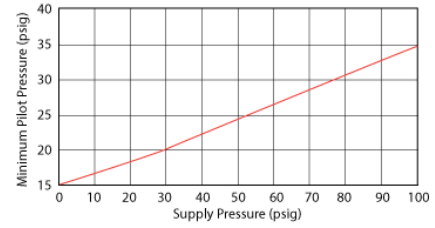


For specialty options such as various seal materials, manual override, or specific pilot to supply ratios, please consult factory.

Function/Porting Options



Minimum Pilot-to-Supply Pressure



Flow-to-Supply Pressure

