

PANEL MOUNT NPV PINCH VALVES



For applications that require better access or enhanced cleanliness, Clippard NPV series pinch valves are also available with a convenient panel mount option. Panel mounted pinch valves provide all the same benefits as Clippard's standard NPV series along with seamless integration and easy accessibility. Compared to standard manifold mounted pinch valves, panel mounting offers simplified installation, a cleaner appearance, and reduced contamination risk.

As with all Clippard pinch valves, the panel mounted NPV series features an unobstructed flow path with zero dead volume—only the inside of the tubing contacts the fluid.

- Unobstructed flow path
- Each valve comes with 12" (30 cm) of silicone tubing pre-installed
- Tubing is easily replaceable
- Low power consumption
- High cycle life
- Large variety of tubing sizes available

Connection	18" (45 cm) wire leads
Documentation	CE, RoHS
Function	2-way normally-open or normally-closed
Material, Body	Aluminum ENP
Material, Wetted	Silicone tubing (<i>no wetted areas in valve</i>)
Max. Pressure	30 psig (2 bar)
Medium	Air, water, gas, or compatible fluids
Mount	Thru panel (max. thickness 1/4")
Operating Pressure	0 to 30 psig (0 to 2 bar) with standard medical / laboratory grade silicone tubing
Operating Temperature	-20 to 158°F (-29 to 70°C)
Ports	#10-32, 1/4-28 UNF, or 1/8 NPS
Response Time	50 ms
Voltage	12 or 24 VDC (<i>additional options available</i>)
Wattage	1.0 to 7.2 watts
More Details	clippard.com/link/npv-p

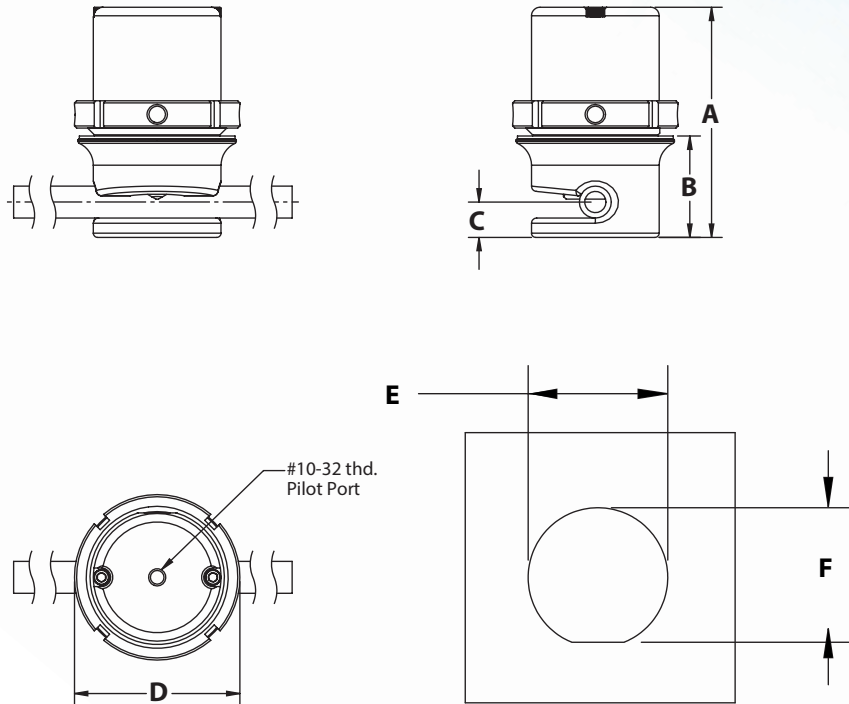


DIMENSIONS

Model	2	3	4
A - N.O.	2.04" (51.89)	2.45" (62.23)	2.83" (71.98)
A - N.C.	2.19" (55.74)	2.62" (66.61)	3.01" (76.37)
B	.83" (21.08)	1.04" (26.37)	1.32" (33.58)
C	0.29" (7.37)	0.42" (10.54)	0.53" (13.49)
D	1.45" dia. (36.75)	1.70" dia. (43.13)	1.94" dia. (49.38)
E	1.150" ±0.005" dia. (29.21 ±0.13)	1.390" ±0.005" dia. (35.31 ±0.13)	1.640" ±0.005" dia. (41.66 ±0.13)
F	1.085" ±0.005" (27.56 ±0.13)	1.335" ±0.005" (33.91 ±0.13)	1.580" ±0.005" (40.13 ±0.13)

Dimensions shown are in inches
(millimeters listed in parentheses).

Visit clippard.com for more detailed
2D and 3D drawings.



ORDERING INFORMATION

Model ¹	Additional Circuitry Option	Configuration	Tubing ¹	Voltage
2 3 4	(blank) None L Hit & Hold ² ² L option not available with model 1	1O 1 Tube Normally-Open 1C 1 Tube Normally-Closed	02 07 03 23 04 25 05 27	12 12 VDC 24 24 VDC

¹Use the chart below to identify the appropriate **Model** and **Tubing** based on the desired specifications.

Tubing Type	Max. Pressure	Tubing I.D.	Tubing O.D.	Tubing Wall	Amps	Power	Model	Tubing
Medical/Laboratory Grade Silicone Tubing	30 psig (2 bar)	1/32" (0.8 mm)	3/32" (2.4 mm)	1/32" (0.8 mm)	0.13	1.5 W	2	02
		1/16" (1.6 mm)	1/8" (3.2 mm)	1/32" (0.8 mm)	0.13	1.5 W	2	03
		1/16" (1.6 mm)	3/16" (4.8 mm)	1/16" (1.6 mm)	0.40	4.2 W	3	04
	20 psig (1.4 bar)	1/8" (3.2 mm)	1/4" (6.4 mm)	1/16" (1.6 mm)	0.40	4.2 W	3	05
		1/4" (6.4 mm)	3/8" (9.5 mm)	1/16" (1.6 mm)	0.60	7.2 W	4	07
Sanitary Food Grade Silicone Tubing	14 psig (1 bar)	1/16" (1.6 mm)	1/8" (3.2 mm)	1/32" (0.8 mm)	0.13	1.5 W	2	23
		1/8" (3.2 mm)	1/4" (6.4 mm)	1/16" (1.6 mm)	0.40	4.2 W	3	25
	9 psig (0.6 bar)	1/4" (6.4 mm)	3/8" (9.5 mm)	1/16" (1.6 mm)	0.60	7.2 W	4	27

Example Part Number:

NPV2-1OP-02-12

For more info, scan the
QR code or visit

clippard.com/link/npv-p



PANEL MOUNT NPP PINCH VALVES



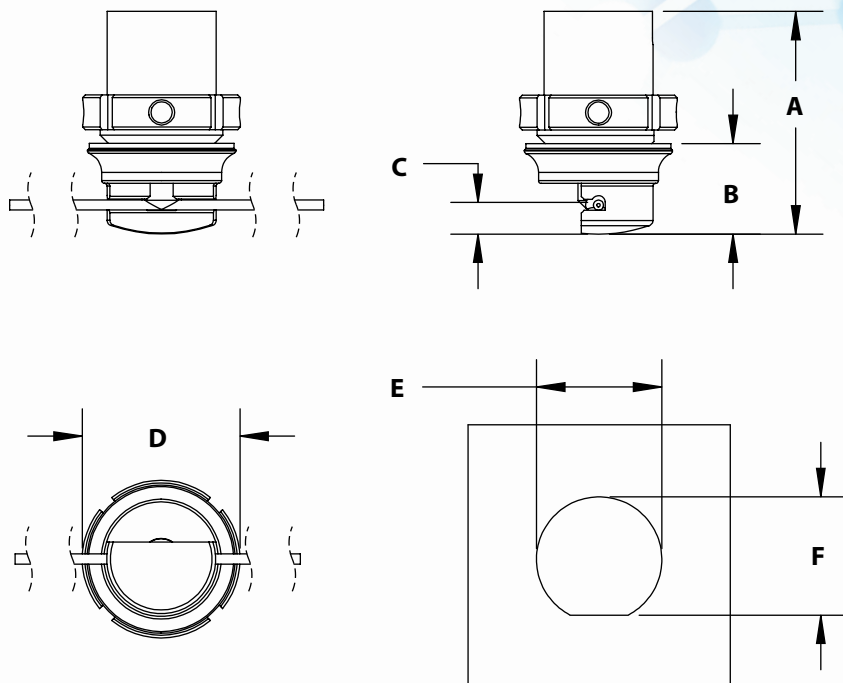
Function	2-way normally-open or normally-closed
Material, Body	Aluminum ENP
Material, Wetted	Silicone or polyurethane tubing (no wetted areas in valve)
Max. Pilot Pressure	250 psig (17 bar)
Medium	Air, water, gas, or compatible fluids
Mount	Thru panel (max. thickness 1/4")
Operating Temp. Range	32 to 230°F (0 to 110°C)
Tubing, Length	Comes with 12" (30 cm) of selected tubing
More Details	clippard.com/link/npp-p

For applications that require better access or enhanced cleanliness, Clippard NPP series pinch valves are also available with a convenient panel mount option. Panel mounted pinch valves provide all the same benefits as Clippard's standard NPP series along with seamless integration and easy accessibility. Compared to standard manifold mounted pinch valves, panel mounting offers simplified installation, a cleaner appearance, and reduced contamination risk.

As with all Clippard pinch valves, the panel mounted NPP series features an unobstructed flow path with zero dead volume—only the inside of the tubing contacts the fluid.

- Unobstructed flow path
- Each valve comes with 12" (30 cm) of silicone tubing pre-installed
- Tubing is easily replaceable
- High cycle life
- Large variety of tubing sizes available





DIMENSIONS

Model	2	4
A - N.O.	1.95" (49.63)	2.70" (68.68)
A - N.C.	2.21" (56.18)	2.77" (70.28)
B	0.77" (19.58)	1.19" (30.25)
C	0.238" (6.03)	0.42" (10.57)
D	1.45" (36.75)	1.94" (49.38)
E	1.150" ±0.005" dia. (29.21 ±0.13)	1.640" ±0.005" dia. (41.66 ±0.13)
F	1.085" ±0.005" (27.56 ±0.13)	1.580" ±0.005" (40.13 ±0.13)

Dimensions shown are in inches
(millimeters listed in parentheses).

Visit clippard.com for more detailed
2D and 3D drawings.

ORDERING INFORMATION

N	P	P	-	P	-
	Model*		Configuration		Tubing*
	2		1O 1 Tube Normally-Open		03 13
	4		1C 1 Tube Normally-Closed		04 15
					05 23
					06 25
					07 27

*Use the chart below to identify the appropriate **Model** and **Tubing** based on the desired specifications.

Tubing Type	Max. Pressure	Tubing I.D.	Tubing O.D.	Tubing Wall	Min. to Open	Min. to Close	Model	Tubing
Medical/Laboratory Grade Silicone Tubing	30 psig (2 bar)	1/16" (1.6 mm)	1/8" (3.8 mm)	1/32" (0.8 mm)	15 psig (1 bar)	30 psig (2 bar)	2	03
	30 psig (2 bar)	1/16" (1.6 mm)	3/16" (4.8 mm)	1/16" (1.6 mm)	40 psig (2.8 bar)	30 psig (2 bar)	2	04
	20 psig (1.4 bar)	1/8" (3.8 mm)	1/4" (6.4 mm)	1/16" (1.6 mm)	10 psig (0.7 bar)	20 psig (1.4 bar)	4	05
	20 psig (1.4 bar)	3/16" (4.8 mm)	5/16" (7.9 mm)	1/16" (1.6 mm)	10 psig (0.7 bar)	20 psig (1.4 bar)	4	06
	20 psig (1.4 bar)	1/4" (6.4 mm)	3/8" (9.5 mm)	1/16" (1.6 mm)	10 psig (0.7 bar)	20 psig (1.4 bar)	4	07
Polyurethane Tubing	105 psig (7.2 bar)	1/16" (1.6 mm)	1/8" (3.8 mm)	1/32" (0.8 mm)	50 psig (3.4 bar)	65 psig (4.5 bar)	2	13
	105 psig (7.2 bar)	1/8" (3.8 mm)	1/4" (6.4 mm)	1/16" (1.6 mm)	45 psig (3 bar)	65 psig (4.5 bar)	4	15
Sanitary Food Grade Silicone Tubing	14 psig (1 bar)	1/16" (1.6 mm)	1/8" (3.8 mm)	1/32" (0.8 mm)	15 psig (1 bar)	30 psig (2 bar)	2	23
	14 psig (1 bar)	1/8" (3.8 mm)	1/4" (6.4 mm)	1/16" (1.6 mm)	10 psig (0.7 bar)	20 psig (1.4 bar)	4	25
	9 psig (0.6 bar)	1/4" (6.4 mm)	3/8" (9.5 mm)	1/16" (1.6 mm)	10 psig (0.7 bar)	20 psig (1.4 bar)	4	27

Example Part Number:

NPP2-1OP-03

For more info, scan the
QR code or visit

clippard.com/link/npp-p

