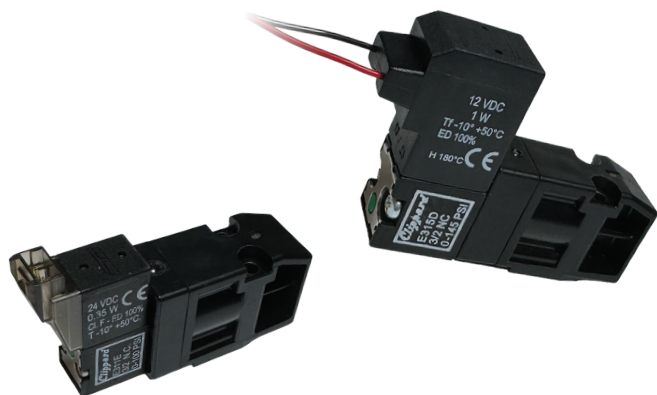


PHV SERIES BOOSTER VALVE

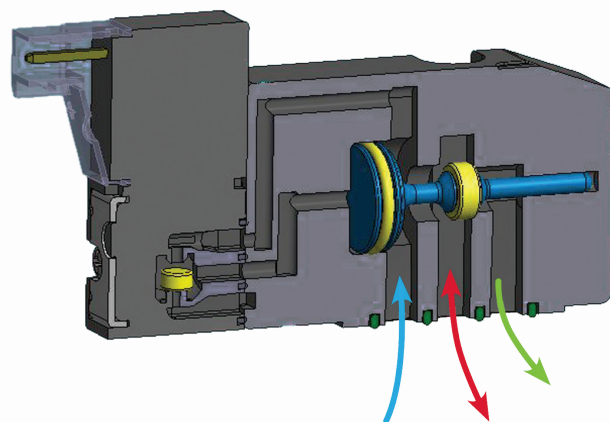
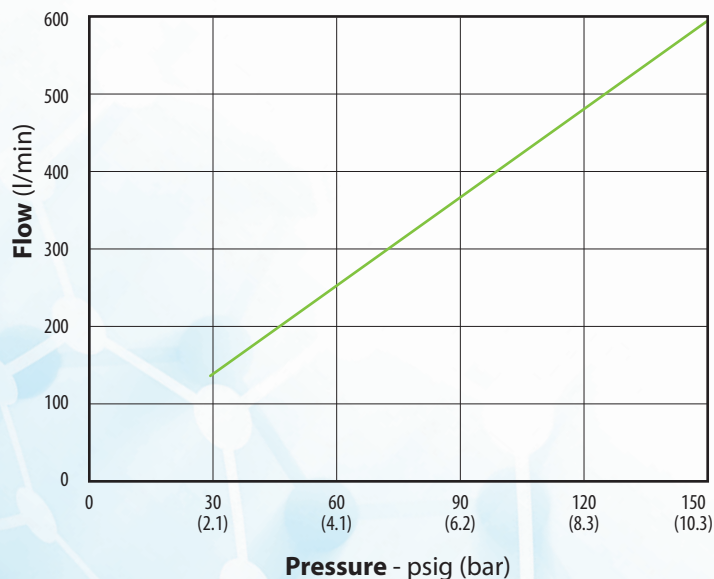


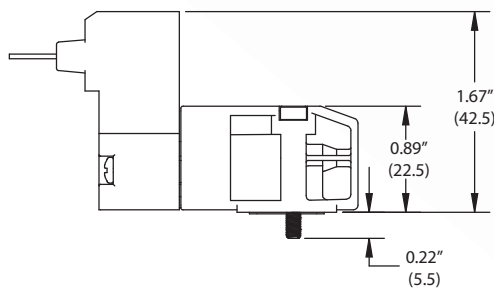
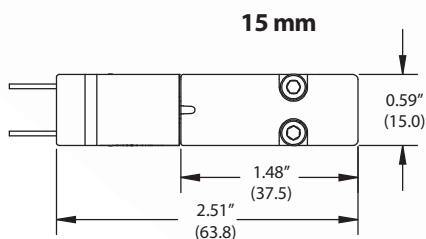
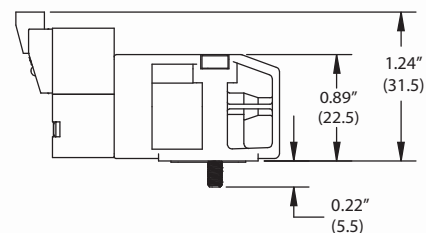
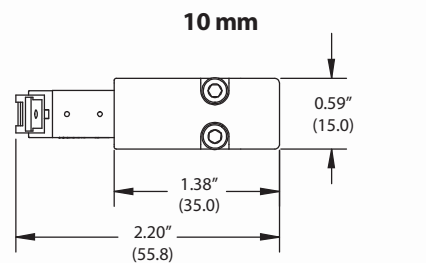
Clippard's PHV Series booster valve delivers high performance in a compact, pressure-piloted design. Engineered for manifold mounting, it drives output flows up to 400 l/min at 100 psig with a fast 10 ms nominal response. Its low power consumption ensures efficient, cool-running operation—ideal for dense assemblies and space-constrained environments. The PHV integrates seamlessly into control systems across medical, packaging, and industrial automation applications, offering reliable actuation and high flow without compromising energy efficiency or speed.

Connector	Wire leads*
Function	3-way normally-closed
Manifold	EPHVM-01, M-EPHVM-01 (metric)
Material, Body	Nickel-plated brass, stainless steel, nylon
Material, Manifold	Clear anodized aluminum
Material, Seals	FKM, polyurethane, NBR, HNBR
Max. Flow	400 l/min @ 100 psig (7 bar)
Medium	Air
Operating Pressure Range	10 mm: 30 to 100 psig (2-7 bar) 15mm: 30 to 150 psig (2-10 bar)
Operating Temperature Range	30 to 122°F (-1 to 50°C)
Power Consumption	10 mm: 3.5 watts in rush; 0.35 watts in maintenance phase 15mm: 1 watt (0.032" orifice)
Ports	Manifold mount
Response Time	10 ms nominal
Voltage	12 or 24 VDC*
Voltage Tolerance	±10%
More Details	clippard.com/link/phv

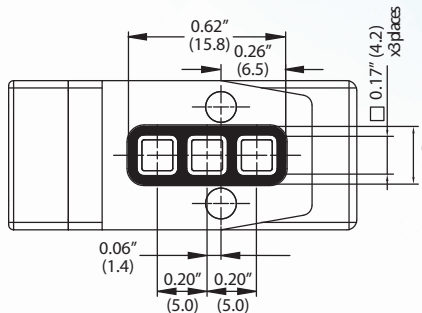
*Additional connectors and voltages available. See website or contact Clippard.

TYPICAL FLOW

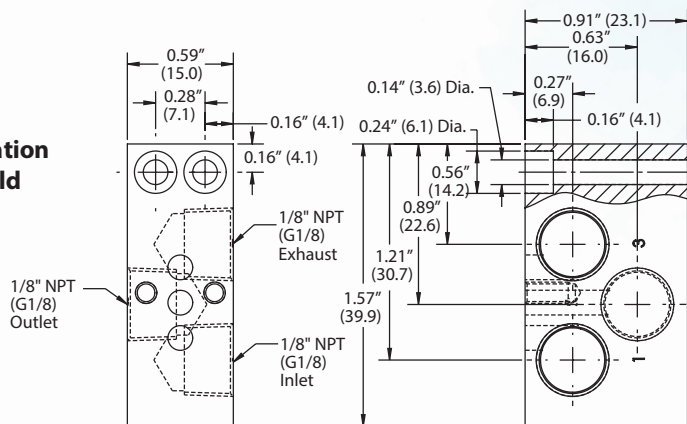




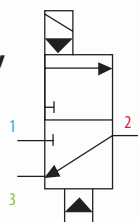
Pneumatic Interface



Single-Station Manifold



3-Way



Dimensions shown are in inches
(millimeters listed in parentheses).

Visit clippard.com for more detailed
2D and 3D drawings.

ORDERING INFORMATION

P H V ☐ ☐ **N C - E3** - - - - ☐

Pilot

10 10 mm
15 15 mm*

Valve

If 10 mm pilot is selected: 11E-3C 10 mm ISO Series
If 15 mm pilot is selected: 15D-1W 15 mm, 0.032" (0.8 mm) Orifice

Orientation

R Right (coil up—standard)
L Left (coil down—available)

Voltage

012 12 VDC
024 24 VDC

*Additional connectors and voltages available. See website or contact Clippard.

MANIFOLDS

EPHVM-01 Single-Station, 1/8" NPT
M-EPHV-01 Single-Station, G1/8

Example Part Number:
PHV15RNC-E315D-1W-012

For more info, scan the
QR code or visit
clippard.com/link/phv

