

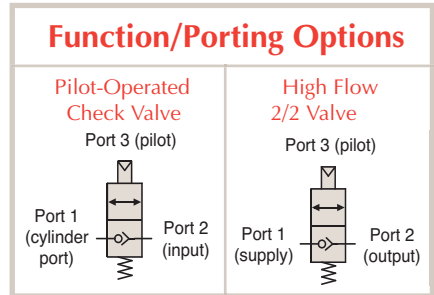


## Pilot-Operated Check Valve

Pilot-Operated Check Valves work as standard check valves, but can be opened with an air pilot signal to permit free flow in the normally “checked” direction. The Clippard Pilot-Operated Check Valve provides the user with a reliable method to check flow in one direction, with the ability to remotely signal a free flow through the valve. Ideal for any circuit that requires this useful function—all in one valve that is easy to connect!



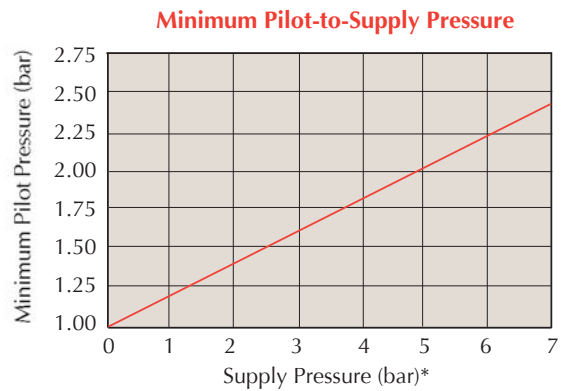
**Medium:** Air, Water or Oil  
**Pressure Range:** 0 to 21 bar (see chart below)  
**Temperature Range:** 0 to 110°C  
**Materials:** ENP brass, anodized aluminum, stainless steel, Nitrile seals



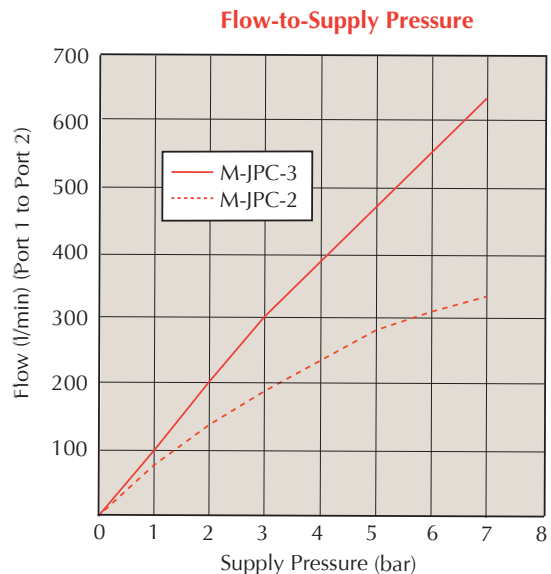
- High flow valve means low pressure drop
- Uses Clippard's superior poppet design
- Variety of port configurations available
- “Auxiliary” port allows ease of plumbing
- Side port (port 2) rotates for ease of positioning



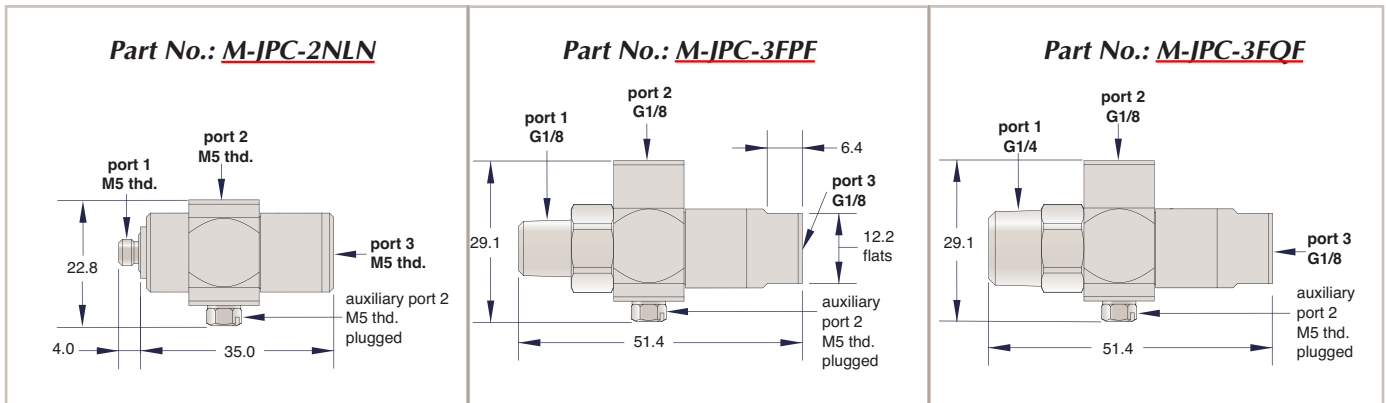
The below circuit depicts a pneumatic cylinder being held in place at any location along its stroke. The use of the Clippard Pilot-Operated Check Valve is the key to position control in this application. Auxiliary porting also simplifies connections and reduces the need for extra fittings.



\* For Pilot-to-Supply pressure above 7 bar, please contact the factory



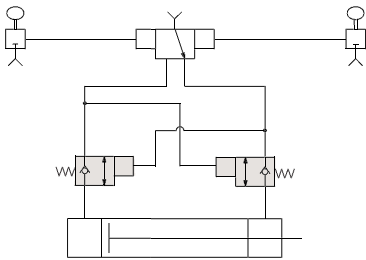
## Models Available



## Options

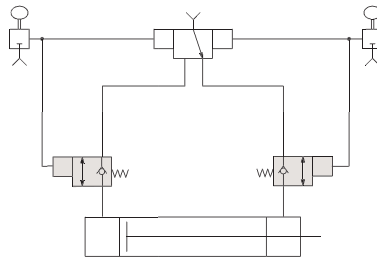
For specialty options such as other port configurations, seal materials, manual override, or specific pilot to supply ratios, please consult factory.

## Sample Uses (Simplified Symbols)



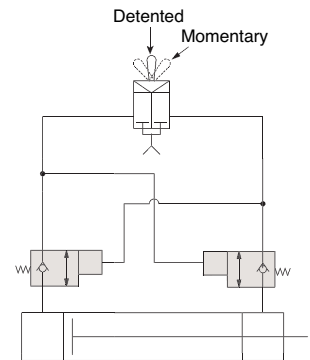
### **Air Loss Lock**

Allows cylinder to lock in position in the event of air loss.



### **Position Adjustment**

Adjust your cylinder position left or right by integrating JPCs to lock a cylinder when signal is not present.



### **Simplified Position Adjustment**

Utilizes Clippard's TV-4, 3 position toggle valve to move a cylinder to any position.

## Proudly Distributed by:

## Disclaimer & Limited Warranty

See [www.clippard.com/warranty](http://www.clippard.com/warranty)



**Clippard Europe S.A.**

+32 10 45 21 34 • [www.clippard.com/jpc](http://www.clippard.com/jpc)