

# Clippard

## GV Series High Flow Poppet Valves Toggle, Stem & Cartridge Styles



- Will accept a variety of manual, air pilot, electrical or mechanical actuators
- Small, compact size, lightweight
- Design flexibility and fast response
- Electroless nickel plated brass and anodized aluminum construction for long life and corrosion resistance
- Stainless steel stems and springs for corrosion resistance
- Optional Corrosion-Resistant Series also available that incorporates ENP brass replacing the anodized aluminum to provide enhanced protection for valves used with mildly corrosive media such as moisture in air or gases. Add "CR-" to the beginning of each part number.

Clippard is known as the pioneer of miniature pneumatic products. The MAV series poppet valves were introduced in 1958 and were known for their bubble tight design with large flow for their small #10-32 threaded ports.

Clippard's GV series valves offer the same characteristics of its original line with flow 10 times more than the MAV series and 2.5 times the flow of the MJV series. These 2-way and 3-way valves are offered in 1/4" NPT and 3/8" push-quick ports along with a cartridge mounted version. With Clippard's versatile 15/32-32 nose thread, a large variety of buttons and valve actuators can be used with the GV stem operated valves. The GTV series are toggle valves with panel mounting capabilities (5/8-32 nose thread). The outlet port on all GV valves can be easily positioned to any orientation for mounting convenience.

**Medium:** 2-Way: Air, Water or Oil; 3-Way: Air

**Input Pressure:** 150 psig max.

**Air Flow:** 38 scfm @ 50 psig; 67 scfm @ 100 psig

**Temperature Range:** 32 to 230°F (0 to 110°C)

**Ports:** 1/4" NPT, 3/8" Push-Quick, Cartridge

**Force for Full Stem Travel:** 9 lb. nominal @ 100 psig

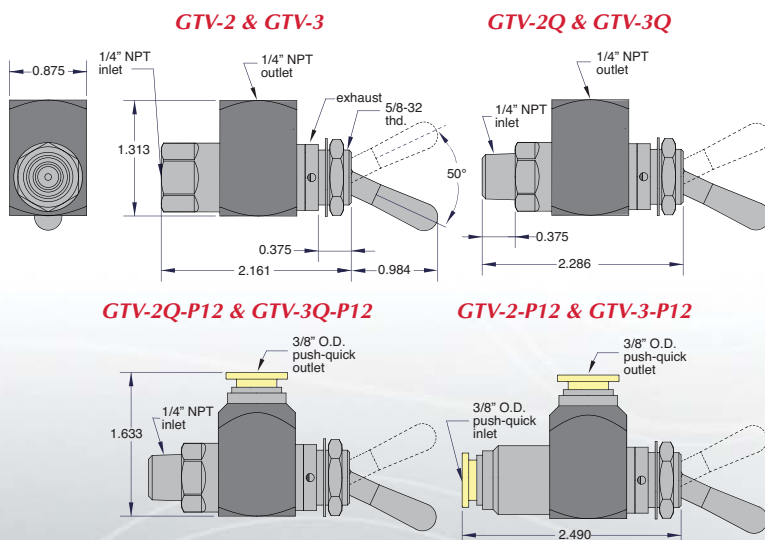
**Stem Travel:** 1/8"

**Mounting (Cartridge Style):** Inserts into a 0.687" bore

**Stem:** Stainless Steel

**Toggle:** Electroless Nickel-Plated Steel

**Seals:** Nitrile, FKM optional



### Order Information

Part No.	Description
<u>GTV-2</u>	2-Way Toggle Valve, 1/4" NPT Female
<u>GTV-2Q</u>	2-Way Toggle Valve, 1/4" NPT Male
<u>GTV-2Q-P12</u>	2-Way Toggle Valve, 1/4" NPT, 3/8" PQ Fitting
<u>GTV-2-P12</u>	2-Way Toggle Valve, 3/8" Push-Quick Fittings
<u>GTV-3</u>	3-Way Toggle Valve, 1/4" NPT Female
<u>GTV-3Q</u>	3-Way Toggle Valve, 1/4" NPT Male
<u>GTV-3Q-P12</u>	3-Way Toggle Valve, 1/4" NPT, 3/8" PQ Fitting
<u>GTV-3-P12</u>	3-Way Toggle Valve, 3/8" Push-Quick Fittings

For optional Corrosion-Resistant Series, add "CR-" to the beginning of each part number

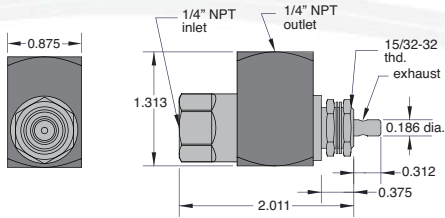
### Clippard Instrument Laboratory, Inc.

7390 Colerain Avenue • Cincinnati, OH 45239 • 513-521-4261 • 877-245-6247 • Fax 513-521-4464 • [www.clippard.com](http://www.clippard.com)

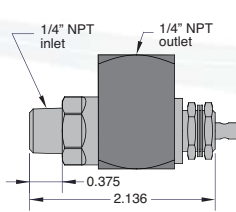
Technical Data Bulletin 7.2.13

## Stem & Cartridge Styles

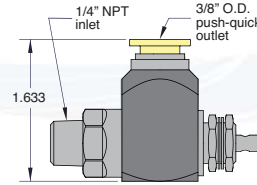
GV-2 & GV-3



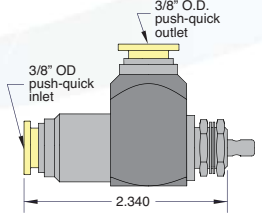
GV-2Q & GV-3Q



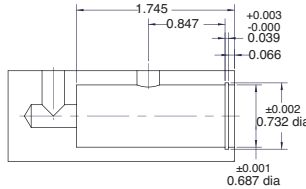
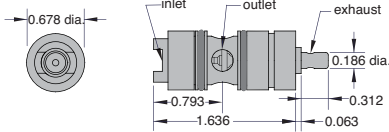
GV-2Q-P12 & GV-3Q-P12



GV-2-P12 & GV-3-P12



GV-2C & GV-3C



### Order Information

Part No.	Description
<a href="#">GV-2C</a>	2-Way Stem Cartridge Valve
<a href="#">GV-2</a>	2-Way Stem Valve, 1/4" NPT Female
<a href="#">GV-2Q</a>	2-Way Stem Valve, 1/4" NPT Male
<a href="#">GV-2Q-P12</a>	2-Way Stem Valve, 1/4" NPT, 3/8" Push-Quick Fitting
<a href="#">GV-2-P12</a>	2-Way Stem Valve, 3/8" Push-Quick Fittings

### Order Information

Part No.	Description
<a href="#">GV-3C</a>	3-Way Stem Cartridge Valve
<a href="#">GV-3</a>	3-Way Stem Valve, 1/4" NPT Female
<a href="#">GV-3Q</a>	3-Way Stem Valve, 1/4" NPT Male
<a href="#">GV-3Q-P12</a>	3-Way Stem Valve, 1/4" NPT, 3/8" Push-Quick Fitting
<a href="#">GV-3-P12</a>	3-Way Stem Valve, 3/8" Push-Quick Fittings

For optional Corrosion-Resistant Series, add "CR-" to the beginning of each part number



### Single-Acting, Spring Return Air Pilot Actuators

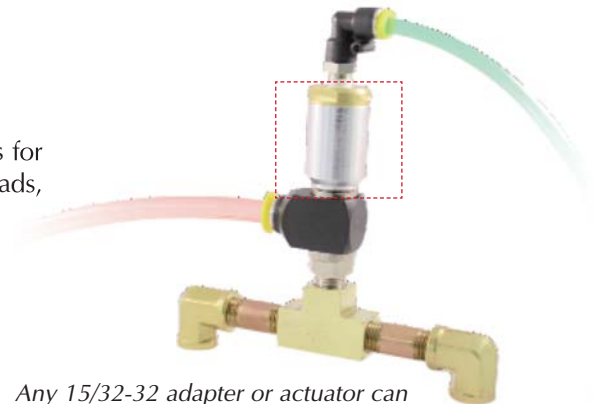
Clippard's MPA Series are ideal actuators for the GV valves offering numerous threads, bore sizes and force factors.

- Input Pressure: 250 psig
- Constructed of brass, stainless steel, nitrile rubber and Acetal
- Mounting via 15/32-32 female thread

### Order Information

Part No.	Thread	Bore Size	Min. Pilot Pressure*
<a href="#">MPA-3</a>	#10-32	0.375"	100 psig
<a href="#">MPA-3P</a>	1/8" NPT	0.375"	100 psig
<a href="#">MPA-5</a>	#10-32	0.625"	40 psig
<a href="#">MPA-5P</a>	1/8" NPT	0.625"	40 psig
<a href="#">MPA-7</a>	1/8" NPT	0.875"	25 psig
<a href="#">MPA-10P</a>	#10-32	1.250"	15 psig

\* with 100 psig to valve inlet



Any 15/32-32 adapter or actuator can be used on all stem-operated GV Series valves

**Professionally Distributed by:**

## Clippard Instrument Laboratory, Inc.

7390 Colerain Avenue • Cincinnati, OH 45239 • 513-521-4261 • 877-245-6247 • Fax 513-521-4464 • [www.clippard.com](http://www.clippard.com)  
 Technical Data Bulletin 7.2.13