

Clippard

DV Series High Flow Electronic Valves



The Next "Gen" Valves that are compact, quick and offers flows to 100 l/min!

Clippard Minimatic® electronic valves are precision-built control valves utilizing Clippard's patented valving principle. The powerful DV- Series was designed as the next generation of the well-known and trusted original EV line of Clippard "Mouse" valves. With a cycle life of over a billion, a solid, compact design, and extremely high flow rates, these valves are suitable for many applications across numerous diverse industries. A variety of voltage, connector and mounting options are available.

Valve Type: 2-Way or 3-Way, Normally-Closed or Normally-Open, Fully-Ported (3-Way)

Medium: Compatible Fluids (40 micron filter recommended)

Air Flow: DV-2/DT-2: 100 l/min @ 100 psig*
DV-2-L/DT-2-L: 100 l/min @ 50 psig*
DV-3/DT-3: 70 l/min @ 100 psig*

Pressure Range: Vac. to 100 psig*

Power Consumption: 1.9 watts

Ports: #10-32 or M5 (on Manifold Mounted versions)

Ambient Temperature Range: 32 to 130°F at continuous duty*

Response: 10 to 15 milliseconds*

Electrical Connection: Spade Terminals or Wire Leads*

Operating Range: 95 to 125% of rated voltage

Voltage: 12 or 24 VDC*

Mounting: Manifold or Cartridge Style (inserts into a 3/4" bore)*

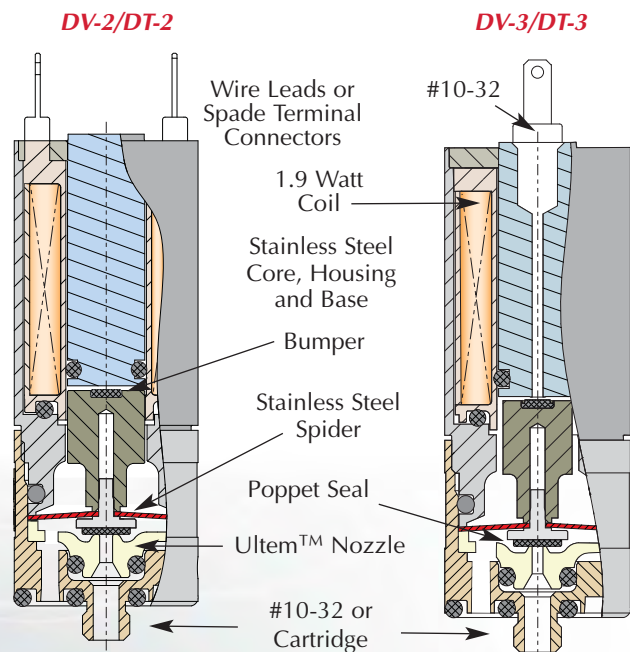
Wetted Materials: Ultem™, Stainless Steel**

Seal Material: Nitrile standard. FKM ("-V"), EPDM ("-E"), Silicone ("-S") optional**

* Consult factory for special configurations.

** Other materials available for special design/project requirements. Consult factory.

- Industry standard for leak-free operation
- Over 1,000,000,000 cycles
- Fast response time
- Large flows in small, sleek design
- Low heat rise/low power
- Robust stainless steel "Spider" flat armature spring



™ Ultem is a trademark of SABIC

© Minimatic is a registered trademark of Clippard Instrument Laboratory, Inc.

Clippard Instrument Laboratory, Inc.

7390 Colerain Avenue • Cincinnati, OH 45239 • 513-521-4261 • 877-245-6247 • Fax 513-521-4464 • www.clippard.com

Technical Data Bulletin 4.2.15

Ordering Information



Spade Terminals

Manifold Mount Cartridge Style Voltage

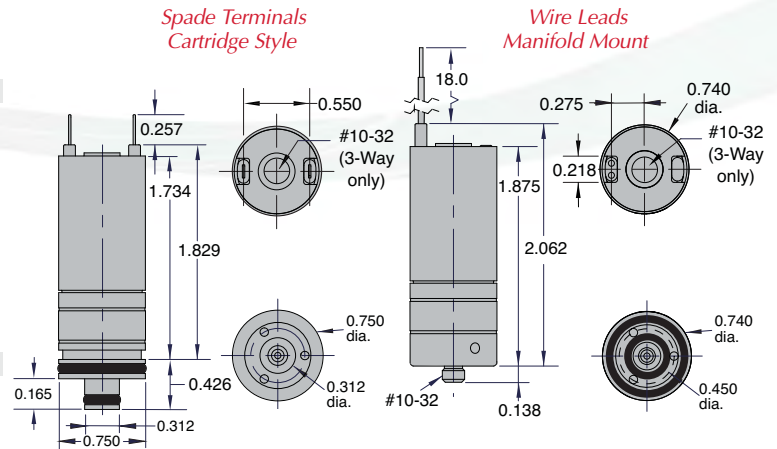
2-Way	DT-2C-12	DT-2C-24	12 VDC
	DT-2M-12	DT-2C-24	24 VDC
	DT-2M-12-L	DT-2C-12-L	12 VDC
	DT-2M-24-L	DT-2C-24-L	24 VDC



Wire Leads

Manifold Mount Cartridge Style Voltage

2-Way	DV-2C-12	DV-2C-24	12 VDC
	DV-2M-12	DV-2C-24	24 VDC
	DV-2M-12-L	DV-2C-12-L	12 VDC
	DV-2M-24-L	DV-2C-24-L	24 VDC
3-Way	DV-3C-12	DV-3C-24	12 VDC
	DV-3M-12	DV-3C-24	24 VDC
	DV-3M-12-L	DV-3C-12-L	12 VDC
	DV-3M-24-L	DV-3C-24-L	24 VDC



Multi-Station Manifolds

Construction: Black anodized aluminum

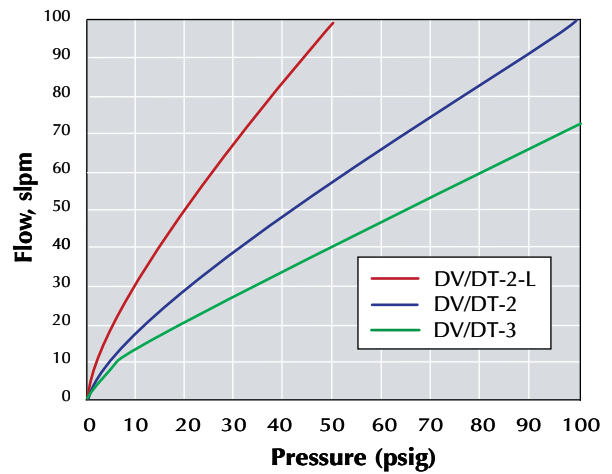
Ports: 1/8" NPT

Custom manifolds available. Consult factory.



Part No.

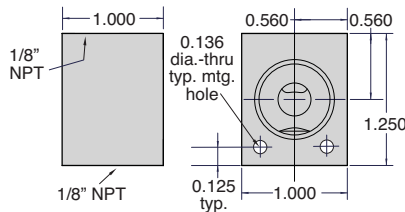
15781-2	2-Station Manifold
15781-4	4-Station Manifold



Single-Station Manifolds

Construction: ENP brass standard. Other materials available. Consult factory.

Cartridge Style

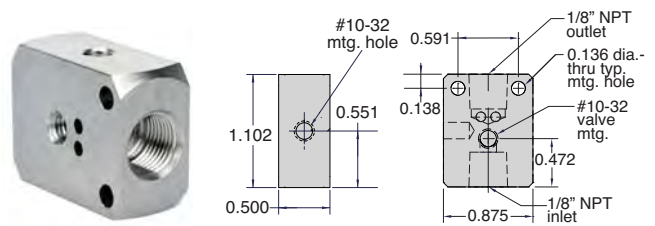


Mounting screw and washer furnished

Part No.

15492-1	Cartridge Style Manifold
-------------------------	--------------------------

Manifold Mount



Part No.

15490-5	Manifold Mount
-------------------------	----------------

Professionally Distributed by:

Clippard Instrument Laboratory, Inc.

7390 Colerain Avenue • Cincinnati, OH 45239 • 513-521-4261 • 877-245-6247 • Fax 513-521-4464 • www.clippard.com
 Technical Data Bulletin 4.2.15 • For Warranty & Disclaimer Information, visit www.clippard.com/warranty