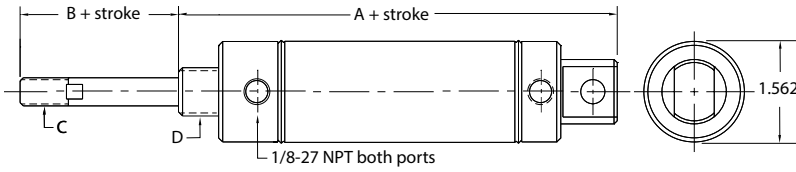


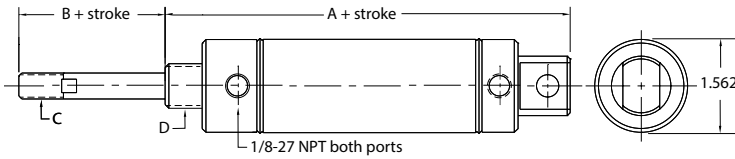
CBR-24-□-□



Note: Certain Options may cause the overall length of the cylinder to change. View complete 2D drawings and 3D CAD models at clippard.com.

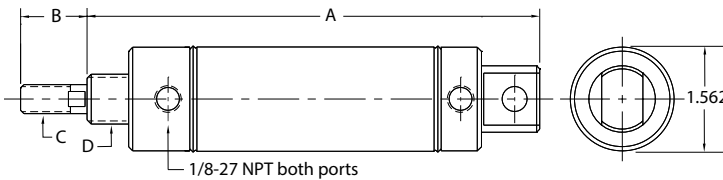
	A	B	C	D
CBR-24-	5.125 + 1.687 for each 1" of stroke	1.000	7/16-20 thd. x 0.750	3/4-16 thd. x 0.625

CDR-24-□-□



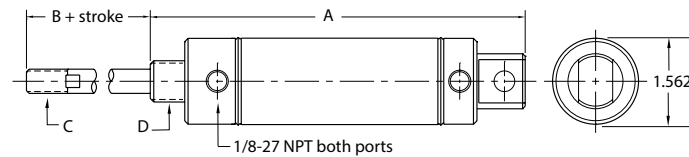
	A	B	C	D
CDR-24-	4.500	1.000	7/16-20 thd. x 0.750	3/4-16 thd. both ends x 0.625

CFR-24-□-□



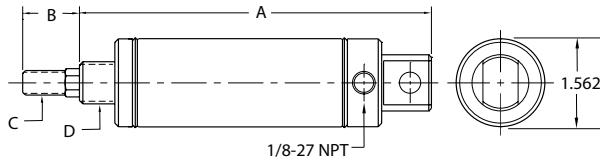
	A	B	C	D
CFR-24-	5.125 + 1.687 for each 1" of stroke	1.000	7/16-20 thd. x 0.750	3/4-16 thd. x 0.625

CRR-24-□-□



	A	B	C	D
CRR-24-	4.062 + 1.687 for each 1" of stroke	1.000	7/6-20 thd. x 0.750	3/4-16 thd. x 0.625

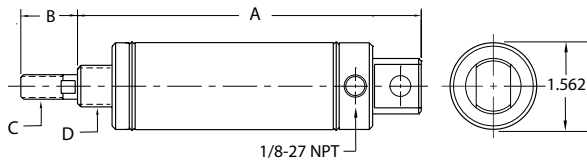
CSN-24-□-□



Note: Certain Options may cause the overall length of the cylinder to change. View complete 2D drawings and 3D CAD models at clippard.com.

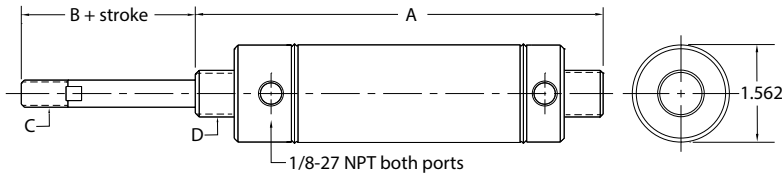
	A	B	C	D
CSN-24-	3.250 + 1.687 for each 1" of stroke	1.000	7/16-20 thd. x 0.750	3/4-16 thd. x 0.625

CSR-24-□-□



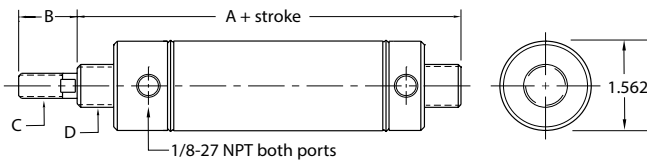
	A	B	C	D
CSR-24-	3.250 + 1.687 for each 1" of stroke	1.000	7/16-20 thd. x 0.750	3/4-16 thd. x 0.625

EBR-24-□-□



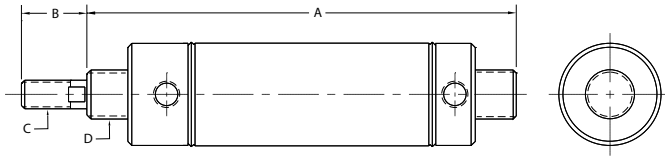
	A	B	C	D
EBR-24-	4.468 + 1.687 for each 1" of stroke	1.000	7/16-20 thd. x 0.750	3/4-16 thd. both ends x 0.625

EDR-24-□-□



	A	B	C	D
EDR-24-	4.250	1.000	7/16-20 thd. x 0.750	3/4-16 thd. both ends x 0.625

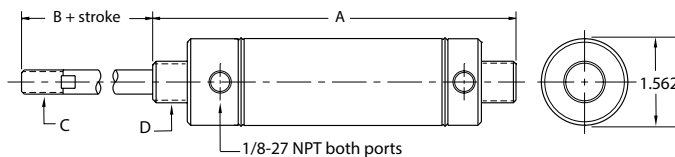
EFR-24-□-□



Note: Certain Options may cause the overall length of the cylinder to change. View complete 2D drawings and 3D CAD models at clippard.com.

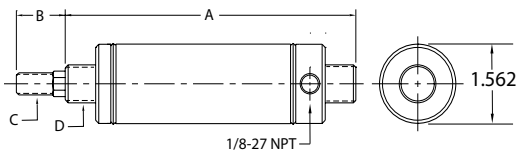
	A	B	C	D
EFR-24-	4.468 + 1.687 for each 1" of stroke	1.000	7/16-20 thd. x 0.750	3/4-16 thd. both ends x 0.625

ERR-24-□-□



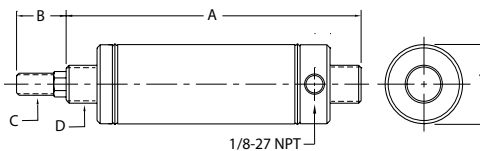
	A	B	C	D
ERR-24-	3.812 + 1.687 for each 1" of stroke	1.000	7/16-20 thd. x 0.750	3/4-16 thd. both ends x 0.625

ESN-24-□-□



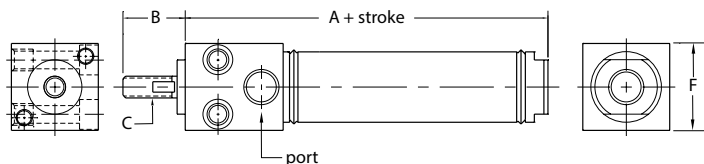
	A	B	C	D
ESN-24-	3.000 + 1.687 for each 1" of stroke	1.000	7/16-20 thd. x 0.750	3/4-16 thd. both ends x 0.625

ESR-24-□-□



	A	B	C	D
ESR-24-	3.000 + 1.687 for each 1" of stroke	1.000	7/16-20 thd. x 0.750	3/4-16 thd. both ends x 0.625

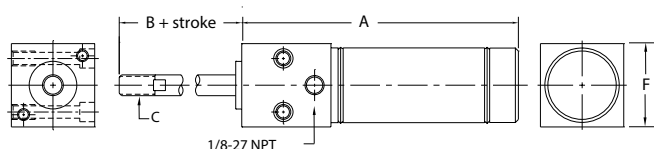
FDR-□□-□-□



Note: Certain Options may cause the overall length of the cylinder to change. View complete 2D drawings and 3D CAD models at clippard.com.

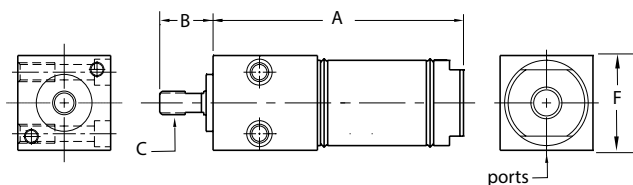
	A	B	C	F	Port
FDR-08-	2.062	0.750	#10-32 thd. x 0.562	0.750 sq.	#10-32
FDR-10-	2.062	0.750	#10-32 thd. x 0.562	0.750 sq.	#10-32
FDR-12-	2.875	0.750	1/4-28 thd. x 0.562	1.000 sq.	1/8-27 NPT
FDR-17-	3.265	0.750	5/16-24 thd. x 0.562	1.250 sq.	1/8-27 NPT
FDR-24-	3.843	1.125	7/16-20 thd. x 0.750	1.750 sq.	1/8-27 NPT

FRR-24-□-□



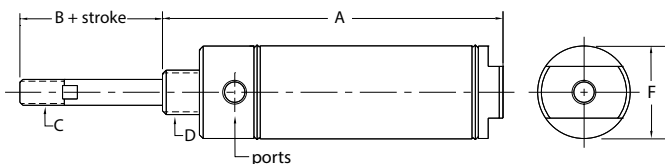
	A	B	C	F
FRR-24-	3.593 + 1.687 for each 1" of stroke	1.125	7/16-20 thd. x 0.750	1.750 sq.

FSR-□□-□-□



	A	B	C	F	Ports
FSR-08-	1.875 + 0.937 for each 1/2" of stroke	0.687	#10-32 thd. x 0.562	0.750 sq.	#10-32
FSR-10-	1.875 + 0.937 for each 1/2" of stroke	0.687	#10-32 thd. x 0.562	0.750 sq.	#10-32
FSR-12-	2.218 + 1.687 for each 1" of stroke	0.718	1/4-28 thd. x 0.562	1.000 sq.	1/8-27 NPT
FSR-17-	2.578 + 1.562 for each 1" of stroke	0.718	5/16-24 thd. x 0.562	1.250 sq.	1/8-27 NPT
FSR-24-	3.406 + 1.687 for each 1" of stroke	1.125	7/16-20 thd. x 0.750	1.750 sq.	1/8-27 NPT

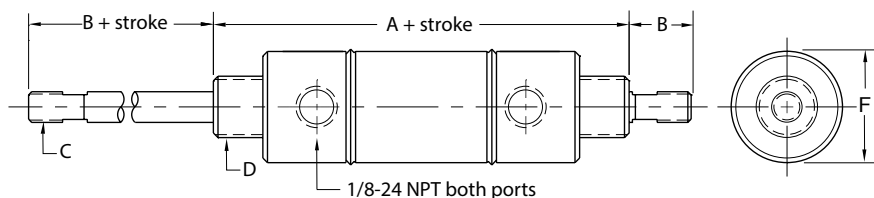
SBR-□□-□-□



Note: Certain Options may cause the overall length of the cylinder to change. View complete 2D drawings and 3D CAD models at clippard.com.

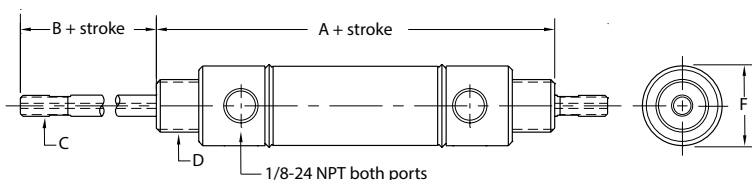
	A	B	C	D	F	Ports
SBR-12-	3.093 + 1.687 for each 1" of stroke	0.625	1/4-28 thd. x 0.562	5/8-18 thd. x 0.500	0.875 dia.	1/8-27 NPT
SBR-17-	3.437 + 1.562 for each 1" of stroke	0.625	5/16-24 thd. x 0.562	5/8-18 thd. x 0.500	1.125 dia.	1/8-27 NPT
SBR-24-	3.656 + 1.687 for each 1" of stroke	1.000	7/16-20 thd. x 0.750	3/4-16 thd. x 0.625	1.562 dia.	1/8-27 NPT
SBR-32-	4.562 + 2.000 for each 1" of stroke	1.250	1/2-20 thd. x 0.875	1 1/4-12 thd. x 0.812	2.075 dia.	1/4-18 NPT

□□-SDD-□□-□-□



	A	B	C	D	F
SDD-08-	2.812	0.625	#10-32 thd. both ends x 0.562	7/16-20 thd. both ends x 0.375	0.687 dia.
SDD-09-	2.964	0.625	#10-32 thd. both ends x 0.562	7/16-20 thd. both ends x 0.375	0.610 dia.
SDD-10-	2.812	0.625	#10-32 thd. both ends x 0.562	7/16-20 thd. both ends x 0.375	0.687 dia.
SDD-12-	4.000	0.625	1/4-28 thd. both ends x 0.562	5/8-18 thd. both ends x 0.500	0.875 dia.
SDD-14-	3.781	0.625	1/4-28 thd. both ends x 0.562	5/8-18 thd. both ends x 0.500	0.937 dia.
SDD-17-	4.031	0.625	5/16-24 thd. both ends x 0.562	5/8-18 thd. both ends x 0.500	1.125 dia.
SDD-20-	5.062	1.000	3/8-24 thd. both ends x 0.750	3/4-16 thd. both ends x 0.625	1.312 dia.
SDD-24-	4.562	1.000	7/16-20 thd. both ends x 0.750	3/4-16 thd. both ends x 0.625	1.562 dia.
SDD-28-	5.875	1.187	1/2-20 thd. both ends x 0.875	1-14 thd. both ends x 0.750	1.812 dia.
SDD-32-	5.687	1.250	1/2-20 thd. both ends x 0.875	1 1/4-12 thd. both ends x 0.812	2.075 dia.
SDD-40-	5.687	1.250	1/2-20 thd. both ends x 0.875	1 3/8-12 thd. both ends x 0.812	2.600 dia.
SDD-48-	6.562	1.625	5/8-18 thd. both ends x 1.250	1 1/2-12 thd. both ends x 0.992	3.125 dia.

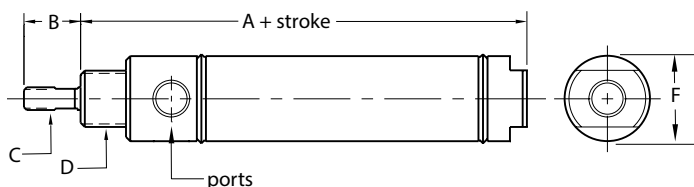
SDH-□□-□-□



Note: Certain Options may cause the overall length of the cylinder to change. View complete 2D drawings and 3D CAD models at clippard.com.

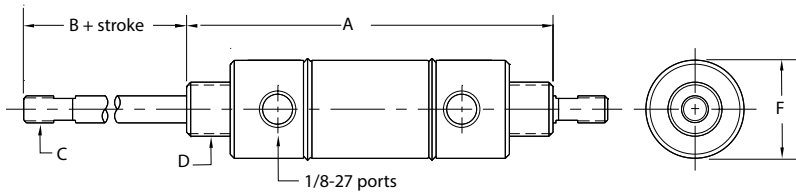
	A	B	C	D	F
SDH-12-	4.000	0.625	1/4-28 thd. both ends x 0.562	5/8-18 thd. both ends x 0.500	0.875 dia.
SDH-14-	3.781	0.625	1/4-28 thd. both ends x 0.562	5/8-18 thd. both ends x 0.500	0.937 dia.
SDH-17-	4.031	0.625	5/16-24 thd. both ends x 0.562	5/8-18 thd. both ends x 0.500	1.125 dia.

□□-SDR-□□-□-□



	A	B	C	D	F	Ports
SDR-05-	1.562	0.375	#5-40 thd. x 0.340	3/8-24 thd. x 0.312	0.500 sq.	#10-32
SDR-08-	2.125	0.625	#10-32 thd. x 0.562	7/16-20 thd. x 0.375	0.687 dia.	#10-32
SDR-09-	2.277	0.625	#10-32 thd. x 0.562	7/16-20 thd. x 0.375	0.610 dia.	#10-32
SDR-10-	2.125	0.625	#10-32 thd. x 0.562	7/16-20 thd. x 0.375	0.687 dia.	1/8-27 NPT
SDR-12-	2.968	0.625	1/4-28 thd. x 0.562	5/8-18 thd. x 0.500	0.875 dia.	1/8-27 NPT
SDR-14-	2.937	0.625	1/4-28 thd. x 0.562	5/8-18 thd. x 0.500	0.938 dia.	1/8-27 NPT
SDR-17-	3.125	0.625	5/16-24 thd. x 0.562	5/8-18 thd. x 0.500	1.125 dia.	1/8-27 NPT
SDR-20-	3.750	1.000	3/8-24 thd. x 0.750	3/4-16 thd. x 0.625	1.312 dia.	1/8-27 NPT
SDR-24-	3.437	1.000	7/16-20 thd. x 0.750	3/4-16 thd. x 0.625	1.562 dia.	1/8-27 NPT
SDR-28-	4.375	1.187	1/2-20 thd. x 0.875	1-14 thd. x 0.750	1.812 dia.	1/4-18 NPT
SDR-32-	4.312	1.250	1/2-20 thd. x 0.875	1 1/4-12 thd. x 0.812	2.075 dia.	1/4-18 NPT
SDR-40-	4.312	1.250	1/2-20 thd. x 0.875	1 3/8-12 thd. x 0.812	2.600 dia.	1/4-18 NPT
SDR-48-	4.875	1.625	5/8-18 thd. x 1.250	1 1/2-12 thd. x 0.992	3.125 dia.	3/8-18 NPT

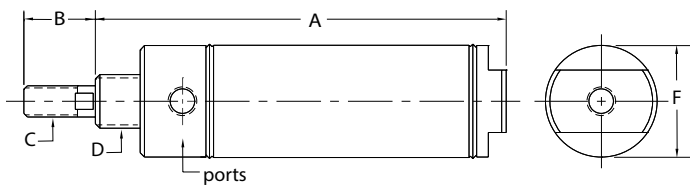
SFD-□□-□-□



Note: Certain Options may cause the overall length of the cylinder to change. View complete 2D drawings and 3D CAD models at clippard.com.

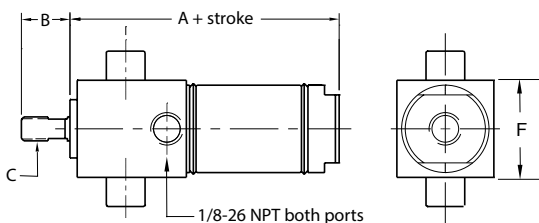
	A	B	C	D	F
SFD-12-	4.125 + 1.687 for each 1" of stroke	0.625	1/4-28 thd. both ends x 0.562	5/8-18 thd. both ends x 0.500	0.875 dia.
SFD-17-	4.343 + 1.562 for each 1" of stroke	0.625	5/16-24 thd. both ends x 0.562	5/8-18 thd. both ends x 0.500	1.125 dia.
SFD-24-	4.781 + 1.687 for each 1" of stroke	1.000	7/16-20 thd. both ends x 0.750	3/4-16 thd. both ends x 0.625	1.562 dia.

SFR-□□-□-□



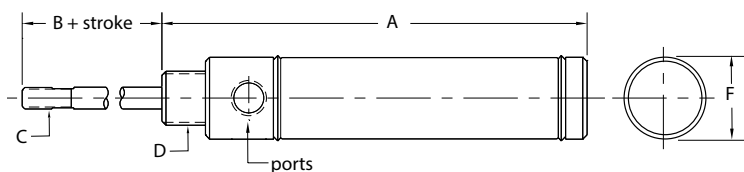
	A	B	C	D	F	Ports
SFR-12-	3.093 + 1.687 for each 1" of stroke	0.625	1/4-28 thd. x 0.562	5/8-18 thd. x 0.500	0.875 dia.	1/8-27 NPT
SFR-17-	3.437 + 1.562 for each 1" of stroke	0.625	5/16-24 thd. x 0.562	5/8-18 thd. x 0.500	1.125 dia.	1/8-27 NPT
SFR-24-	3.656 + 1.687 for each 1" of stroke	1.000	7/16-20 thd. x 0.750	3/4-16 thd. x 0.625	1.562 dia.	1/8-27 NPT
SFR-32-	4.562 + 2.000 for each 1" of stroke	1.250	1/2-20 thd. x 0.875	1 1/4-12 thd. x 0.812	2.075 dia.	1/4-18 NPT

TDR-□□-□-□



	A	B	C	F
TDR-12-	2.875	0.625	1/4-28 thd. x 0.562	1.000 sq.
TDR-17-	3.265	0.625	5/16-24 thd. x 0.562	1.250 sq.
TDR-24-	3.843	1.000	7/16-20 thd. x 0.750	1.750 sq.

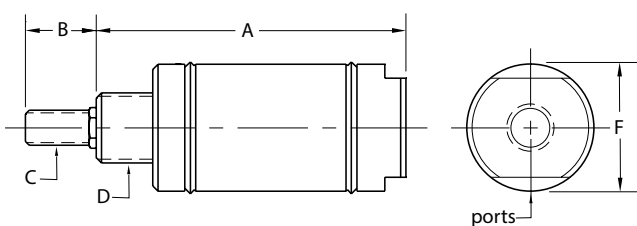
SRR-□□-□-□



Note: Certain Options may cause the overall length of the cylinder to change. View complete 2D drawings and 3D CAD models at clippard.com.

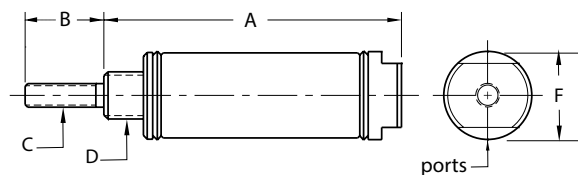
	A	B	C	D	F	Ports
SRR-05-	1.468 + 0.750 for each 1/2" of stroke	0.375	#5-40 thd. x 0.340	3/8-24 thd. x 0.312	0.500 sq.	#10-32
SRR-08-	1.937 + 0.937 for each 1/2" of stroke	0.625	#10-32 thd. x 0.562	7/16-20 thd. x 0.375	0.687 dia.	#10-32
SRR-09-	2.011 + 1.614 for each 1" of stroke	0.625	#10-32 thd. x 0.562	7/16-20 thd. x 0.375	0.610 dia.	#10-32
SRR-10-	1.937 + 0.937 for each 1/2" of stroke	0.625	#10-32 thd. x 0.562	7/16-20 thd. x 0.375	0.687 dia.	#10-32
SRR-12-	2.312 + 1.687 for each 1" of stroke	0.625	1/4-28 thd. x 0.562	5/8-18 thd. x 0.500	0.875 dia.	1/8-27 NPT
SRR-14-	2.312 + 1.562 for each 1" of stroke	0.625	1/4-28 thd. x 0.562	5/8-18 thd. x 0.500	0.937 dia.	1/8-27 NPT
SRR-17-	2.625 + 1.562 for each 1" of stroke	0.625	5/16-24 thd. x 0.562	5/8-18 thd. x 0.500	1.125 dia.	1/8-27 NPT
SRR-20-	3.218 + 1.812 for each 1" of stroke	1.000	3/8-24 thd. x 0.750	3/4-16 thd. x 0.625	1.312 dia.	1/8-27 NPT
SRR-24-	3.187 + 1.687 for each 1" of stroke	1.000	7/16-20 thd. x 0.750	3/4-16 thd. x 0.625	1.562 dia.	1/8-27 NPT
SRR-28-	3.718 + 2.000 for each 1" of stroke	1.187	1/2-20 thd. x 0.875	1-14 thd. x 0.750	1.812 dia.	1/4-18 NPT
SRR-32-	3.546 + 2.000 for each 1" of stroke	1.250	1/2-20 thd. x 0.875	1 1/4-12 thd. x 0.812	2.075 dia.	1/4-18 NPT

SSN-□□-□-□



	A	B	C	D	F	Ports
SSN-08-	1.312 + 0.937 for each 1/2" of stroke	0.625	#10-32 thd. x 0.562	3/8-24 thd. x 0.312	0.562 dia.	#10-32
SSN-09-	1.531 + 1.614 for each 1" of stroke	0.625	#10-32 thd. x 0.562	7/16-20 thd. x 0.375	0.610 dia.	#10-32
SSN-10-	1.312 + 0.937 for each 1/2" of stroke	0.625	#10-32 thd. x 0.562	3/8-24 thd. x 0.312	0.687 dia.	#10-32
SSN-12-	1.500 + 1.687 for each 1" of stroke	0.625	1/4-28 thd. x 0.562	1/2-20 thd. x 0.437	0.812 dia.	1/8-27 NPT
SSN-14-	1.843 + 1.562 for each 1" of stroke	0.625	1/4-28 thd. x 0.562	5/8-18 thd. x 0.500	0.937 dia.	1/8-27 NPT
SSN-17-	1.937 + 1.562 for each 1" of stroke	0.625	5/16-24 thd. x 0.562	5/8-18 thd. x 0.500	1.125 dia.	1/8-27 NPT
SSN-20-	2.406 + 1.812 for each 1" of stroke	1.000	3/8-24 thd. x 0.750	3/4-16 thd. x 0.625	1.312 dia.	1/8-27 NPT
SSN-24-	2.187 + 1.687 for each 1" of stroke	1.000	7/16-20 thd. x 0.750	3/4-16 thd. x 0.625	1.562 dia.	1/8-27 NPT
SSN-28-	2.656 + 2.000 for each 1" of stroke	1.187	1/2-20 thd. x 0.875	1-14 thd. x 0.750	1.812 dia.	1/4-18 NPT

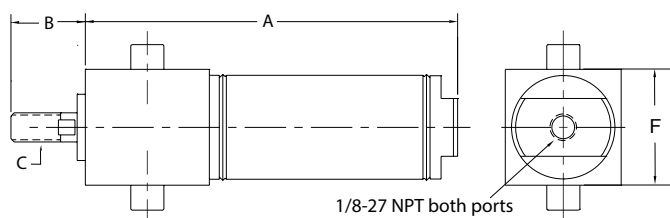
SSR-□□-□-□



Note: Certain Options may cause the overall length of the cylinder to change. View complete 2D drawings and 3D CAD models at clippard.com.

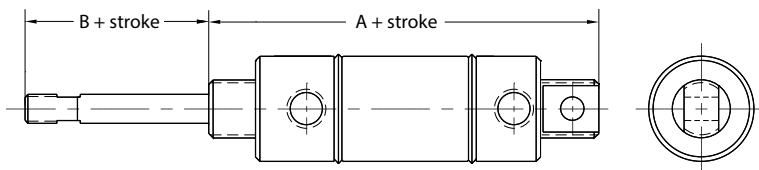
	A	B	C	D	F	Ports
SSR-05-	1.125 + 0.750 for each 1/2" of stroke	0.375	#5-40 thd. x 0.340	1/4-28 thd. x 0.312	0.348 dia.	#10-32
SSR-08-	1.312 + 0.937 for each 1/2" stroke	0.625	#10-32 thd. x 0.562	3/8-24 thd. x 0.312	0.562 dia.	#10-32
SSR-09-	1.531 + 1.614 for each 1" of stroke	0.625	#10-32 thd. x 0.562	7/16-20 thd. x 0.375	0.610 dia.	#10-32
SSR-10-	1.312 + 0.937 for each 1/2" of stroke	0.625	#10-32 thd. x 0.562	3/8-24 thd. x 0.312	0.687 dia.	#10-32
SSR-12-	1.500 + 1.687 for each 1" of stroke	0.625	1/4-28 thd. x 0.562	1/2-20 thd. x 0.437	0.812 dia.	1/8-27 NPT
SSR-14-	1.843 + 1.562 for each 1" of stroke	0.625	1/4-28 thd. x 0.562	5/8-18 thd. x 0.500	0.937 dia.	1/8-27 NPT
SSR-17-	1.937 + 1.562 for each 1" of stroke	0.625	5/16-24 thd. x 0.562	5/8-18 thd. x 0.500	1.125 dia.	1/8-27 NPT
SSR-20-	2.406 + 1.812 for each 1" of stroke	1.000	3/8-24 thd. x 0.750	3/4-16 thd. x 0.625	1.312 dia.	1/8-27 NPT
SSR-24-	2.187 + 1.687 for each 1" of stroke	1.000	7/16-20 thd. x 0.750	3/4-16 thd. x 0.625	1.562 dia.	1/8-27 NPT
SSR-28-	2.656 + 2.000 for each 1" of stroke	1.187	1/2-20 thd. x 0.875	1-14 thd. x 0.750	1.812 dia.	1/4-18 NPT
SSR-32-	3.031 + 2.000 for each 1" of stroke	1.250	1/2-20 thd. x 0.875	1 1/4-12 thd. x 0.812	2.075 dia.	1/4-18 NPT

TSR-□□-□-□



	A	B	C	F
TSR-12-	2.218 + 1.687 for each 1" of stroke	0.625	1/4-28 thd. x 0.562	1.000 sq.
TSR-17-	2.578 + 1.562 for each 1" of stroke	0.625	5/16-24 thd. x 0.562	1.250 sq.
TSR-24-	3.406 + 1.687 for each 1" of stroke	1.000	7/16-20 thd. x 0.750	1.750 sq.

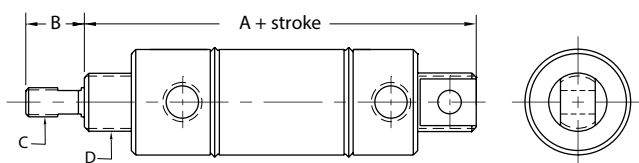
UBR-□□-□-□



Note: Certain Options may cause the overall length of the cylinder to change. View complete 2D drawings and 3D CAD models at clippard.com.

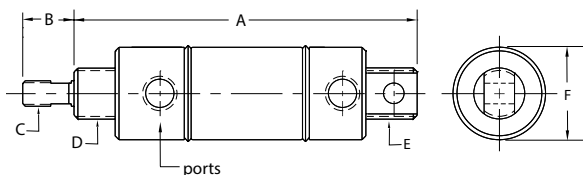
	A	B	C	D	F	Ports
UBR-12-	4.156 + 1.687 for each 1" of stroke	0.625	1/4-28 thd. x 0.562	5/8-18 thd. both ends x 0.500	0.875 dia.	1/8-27 NPT
UBR-17-	4.312 + 1.562 for each 1" of stroke	0.625	5/16-24 thd. x 0.562	5/8-18 thd. both ends x 0.500	1.125 dia.	1/8-27 NPT
UBR-32-	5.937 + 2.000 for each 1" of stroke	1.250	1/2-20 thd. x 0.875	1 1/4-12 thd. both ends x 0.812	2.075 dia.	1/4-18 NPT

□□-UDR-□□-□-□



	A	B	C	D	E	F	Ports
UDR-05-	2.187	0.375	#5-40 thd. x 0.340	3/8-24 thd. x 0.312	3/8-24 thd. x 0.375	0.500 sq.	#10-32
UDR-08-	2.812	0.625	#10-32 thd. x 0.562	7/16-20 thd. x 0.375	7/16-20 thd. x 0.500	0.687 dia.	#10-32
UDR-09-	2.746	0.625	#10-32 thd. x 0.562	7/16-20 thd. x 0.375	7/16-20 thd. x 0.437	0.610 dia.	#10-32
UDR-10-	2.812	0.625	#10-32 thd. x 0.562	7/16-20 thd. x 0.375	7/16-20 thd. x 0.500	0.687 dia.	#10-32
UDR-12-	4.031	0.625	1/4-28 thd. x 0.562	5/8-18 thd. x 0.500	5/8-18 thd. x 0.625	0.875 dia.	1/8-27 NPT
UDR-14-	3.843	0.625	1/4-28 thd. x 0.562	5/8-18 thd. x 0.500	5/8-18 thd. x 0.625	0.937 dia.	1/8-27 NPT
UDR-17-	4.000	0.625	5/16-24 thd. x 0.562	5/8-18 thd. x 0.500	5/8-18 thd. x 0.625	1.125 dia.	1/8-27 NPT
UDR-20-	4.875	1.000	3/8-24 thd. x 0.750	3/4-16 thd. x 0.625	3/4-16 thd. x 0.812	1.312 dia.	1/8-27 NPT
UDR-28-	5.937	1.187	1/2-20 thd. x 0.875	1-14 thd. x 0.750	1-14 thd. x 0.907	1.812 dia.	1/4-18 NPT
UDR-32-	5.687	1.250	1/2-20 thd. x 0.875	1 1/4-12 thd. x 0.812	1 1/4-12 thd. x 0.875	2.075 dia.	1/4-18 NPT
UDR-40-	5.687	1.250	1/2-20 thd. x 0.875	1 3/8-12 thd. x 0.812	1 3/8-12 thd. x 0.875	2.625 dia.	1/4-18 NPT
UDR-48-	6.750	1.625	5/8-18 thd. x 1.250	1 1/2-12 thd. x 0.992	1 1/2-12 thd. x 1.250	3.125 dia.	3/8-18 NPT

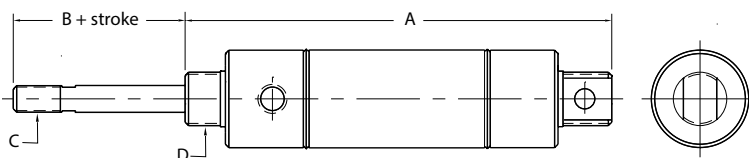
UFR-□□-□-□



Note: Certain Options may cause the overall length of the cylinder to change. View complete 2D drawings and 3D CAD models at clippard.com.

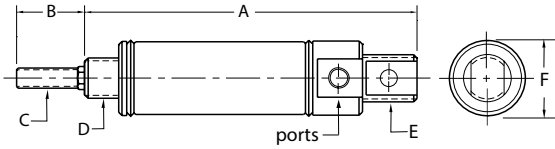
	A	B	C	D	E	F	Ports
UFR-12-	4.156 + 1.687 for each 1" of stroke	0.625	1/4-28 thd. x 0.562	5/8-18 thd. x 0.500	5/8-18 thd. x 0.625	0.875 dia.	1/8-27 NPT
UFR-17-	4.312 + 1.562 for each 1" of stroke	0.625	5/16-24 thd. x 0.562	5/8-18 thd. x 0.500	5/8-18 thd. x 0.625	1.125 dia.	1/8-27 NPT
UFR-32-	5.937 + 2.000 for each 1" of stroke	1.250	1/2-20 thd. x 0.875	1 1/4-12 thd. x 0.812	1 1/4-12 thd. x 0.875	2.075 dia.	1/4-18 NPT

URR-□□-□-□



	A	B	C	D	E	F	Ports
URR-05-	2.093 + 0.750 for each 1/2" of stroke	0.375	#5-40 thd. x 0.340	3/8-24 thd. x 0.312	3/8-24 x 0.375	0.500 sq.	#10-32
URR-08-	2.625 + 0.937 for each 1/2" of stroke	0.625	#10-32 thd. x 0.562	7/16-20 thd. x 0.375	7/16-20 x 0.500	0.687 dia.	#10-32
URR-09-	2.480 + 1.614 for each 1" of stroke	0.625	#10-32 thd. both ends x 0.562	7/16-20 thd. x 0.375	7/16-20 x 0.437	0.610 dia.	#10-32
URR-10-	2.625 + 0.937 for each 1/2" of stroke	0.625	#10-32 thd. both ends x 0.562	7/16-20 thd. x 0.375	7/16-20 x 0.500	0.687 dia.	#10-32
URR-12-	2.718 + 1.687 for each 1" of stroke	0.625	1/4-28 thd. x 0.562	5/8-18 thd. x 0.500	5/8-18 x 0.625	0.875 dia.	1/8-27 NPT
URR-14-	2.906 + 1.562 for each 1" of stroke	0.625	1/4-28 thd. x 0.562	5/8-18 thd. x 0.500	5/18-18 x 0.625	0.937 dia.	1/8-27 NPT
URR-17-	3.062 + 1.562 for each 1" of stroke	0.625	5/16-24 thd. x 0.562	5/8-18 thd. x 0.500	5/8-18 x 0.625	1.125 dia.	1/8-27 NPT
URR-20-	4.716 + 1.812 for each 1" of stroke	1.000	3/8-24 thd. x 0.750	3/4-16 thd. x 0.625	3/4-16 x 0.812	1.312 dia.	1/8-27 NPT
URR-28-	4.937 + 2.000 for each 1" of stroke	1.187	1/2-20 thd. x 0.875	1-14 thd. x 0.750	1-14 x 0.907	1.812 dia.	1/4-18 NPT
URR-32-	4.687 + 2.000 for each 1" of stroke	1.250	1/2-20 thd. x 0.875	1 1/4-12 thd. x 0.812	1 1/4-12 x 0.875	2.075 dia.	1/4-18 NPT

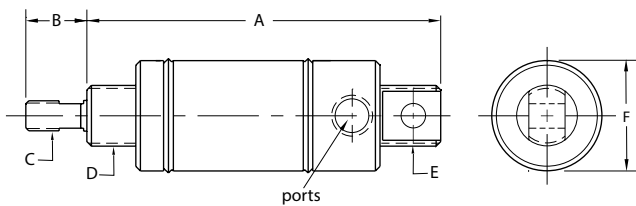
USN-□□-□-□



Note: Certain Options may cause the overall length of the cylinder to change. View complete 2D drawings and 3D CAD models at clippard.com.

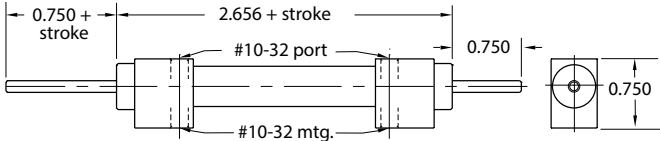
	A	B	C	D	E	F	Ports
USN-08-	2.000 + 0.937 for each 1/2" of stroke	0.625	#10-32 thd. x 0.562	3/8-24 thd. x 0.312	7/16-20 thd. x 0.500	0.687 dia.	#10-32
USN-09-	2.000 + 1.614 for each 1" of stroke	0.625	#10-32 thd. x 0.562	7/16-20 thd. x 0.375	7/16-20 thd. x 0.437	0.610 dia.	#10-32
USN-10-	2.000 + 0.937 for each 1/2" of stroke	0.625	#10-32 thd. x 0.562	3/8-24 thd. x 0.312	7/16-20 thd. x 0.500	0.687 dia.	#10-32
USN-12-	2.562 + 1.687 for each 1" of stroke	0.625	1/4-28 thd. x 0.562	1/2-20 thd. x 0.437	5/8-18 thd. x 0.625	0.875 dia.	1/8-27 NPT
USN-14-	2.750 + 1.562 for each 1" of stroke	0.625	1/4-28 thd. x 0.562	5/8-18 thd. x 0.500	5/8-18 thd. x 0.625	0.937 dia.	1/8-27 NPT
USN-17-	2.828 + 1.562 for each 1" of stroke	0.625	5/16-24 thd. x 0.562	5/8-18 thd. x 0.500	5/8-18 thd. x 0.625	1.125 dia.	1/8-27 NPT
USN-20-	3.531 + 1.812 for each 1" of stroke	1.000	3/8-24 thd. x 0.750	3/4-16 thd. x 0.625	3/4-16 thd. x 0.812	1.312 dia.	1/8-27 NPT
USN-28-	4.218 + 2.000 for each 1" of stroke	1.187	1/2-20 thd. x 0.875	1-14 thd. x 0.750	1-14 thd. x 0.907	1.812 dia.	1/4-18 NPT

USR-□□-□-□

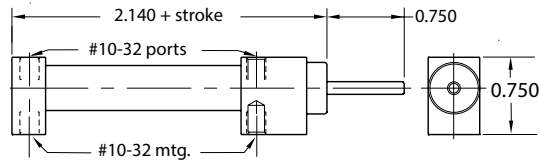


	A	B	C	D	E	F	Ports
USR-05-	1.750 + 0.750 for each 1/2" of stroke	0.375	#5-40 thd. x 0.340	1/4-28 thd. x 0.312	3/8-24 thd. x 0.375	0.437 sq.	#10-32
USR-08-	2.000 + 0.937 for each 1/2" stroke	0.625	#10-32 thd. x 0.562	3/8-24 thd. x 0.312	7/16-20 thd. x 0.500	0.687 dia.	#10-32
USR-09-	2.000 + 1.614 for each 1" of stroke	0.625	#10-32 thd. x 0.562	7/16-20 thd. x 0.375	7/16-20 thd. x 0.437	0.610 dia.	#10-32
USR-10-	2.000 + 0.937 for each 1/2" of stroke	0.625	#10-32 thd. x 0.562	3/8-24 thd. x 0.312	7/16-20 thd. x 0.500	0.687 dia.	#10-32
USR-12-	2.562 + 1.687 for each 1" of stroke	0.625	1/4-28 thd. x 0.562	1/2-20 thd. x 0.437	5/8-18 thd. x 0.625	0.875 dia.	1/8-27 NPT
USR-14-	2.750 + 1.562 for each 1" of stroke	0.625	1/4-28 thd. x 0.562	5/8-18 thd. x 0.500	5/8-18 thd. x 0.625	0.937 dia.	1/8-27 NPT
USR-17-	2.828 + 1.562 for each 1" of stroke	0.625	5/16-24 thd. x 0.562	5/8-18 thd. x 0.500	5/8-18 thd. x 0.625	1.125 dia.	1/8-27 NPT
USR-20-	3.531 + 1.812 for each 1" of stroke	1.000	3/8-24 thd. x 0.750	3/4-16 thd. x 0.625	3/4-16 thd. x 0.812	1.312 dia.	1/8-27 NPT
USR-28-	4.218 + 2.000 for each 1" of stroke	1.187	1/2-20 thd. x 0.875	1-14 thd. x 0.750	1-14 thd. x 0.90	1.812 dia.	1/4-18 NPT
USR-32-	4.406 + 2.000 for each 1" of stroke	1.250	1/2-20 thd. x 0.875	1 1/4-12 thd. x 0.812	1 1/4-12 thd. x 0.875	2.075 dia.	1/4-18 NPT

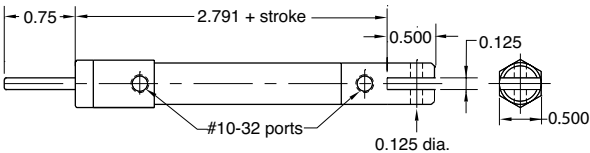
3BDD-□



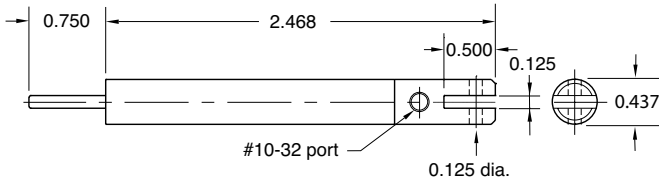
3BDS-□



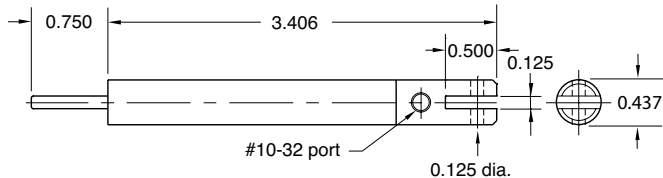
3CD-□



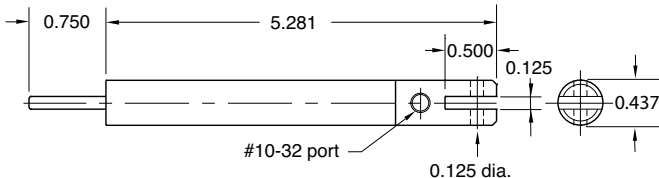
3CS-1/2



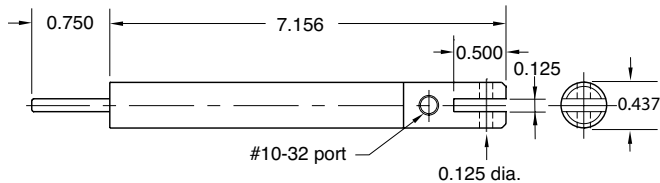
3CS-1



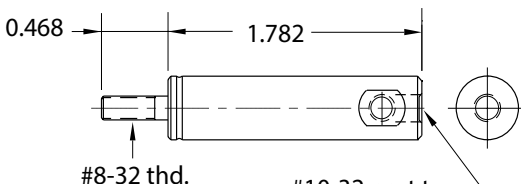
3CS-2



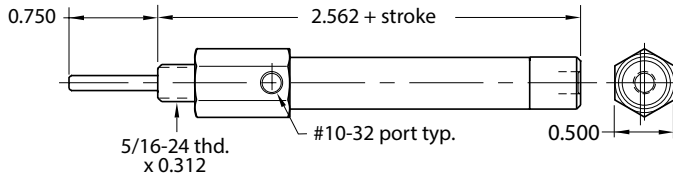
3CS-3



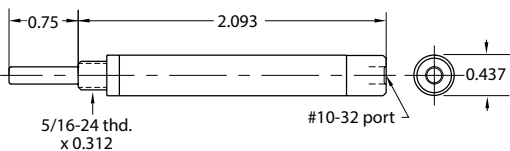
3PS-1/2



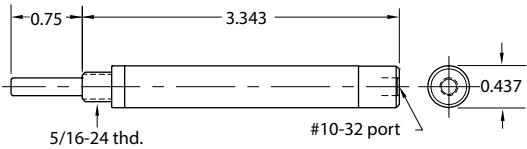
3SD-□



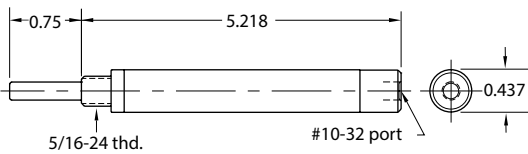
3SS-1/2



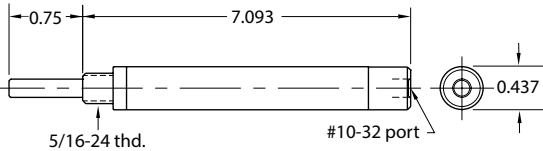
3SS-1



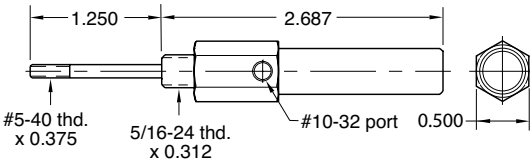
3SS-2



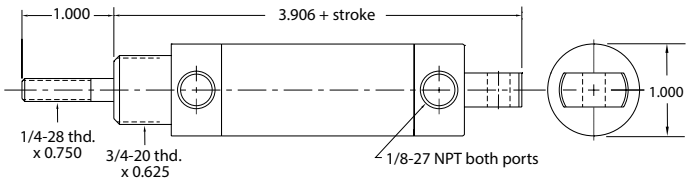
3SS-3



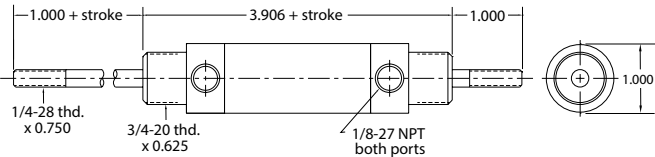
3SS-AR-1/2



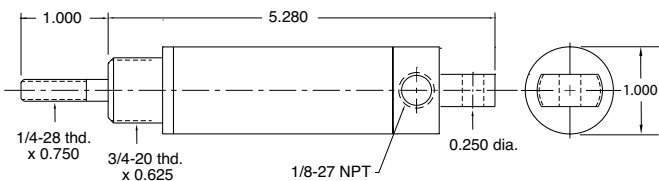
7D-□



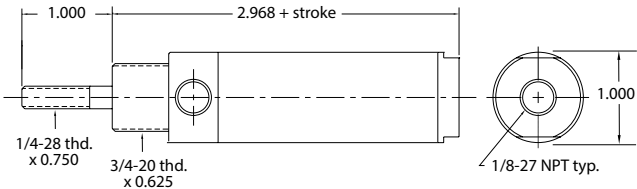
7DD-□



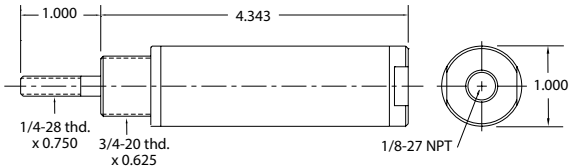
7S-1



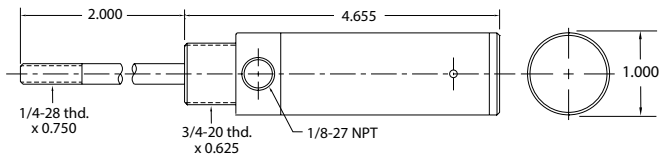
7SD-□



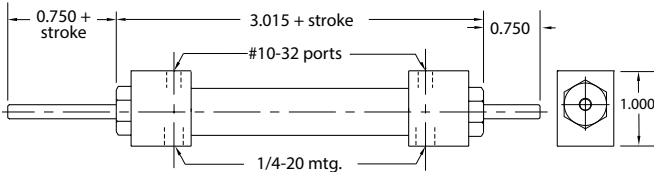
7SS-1



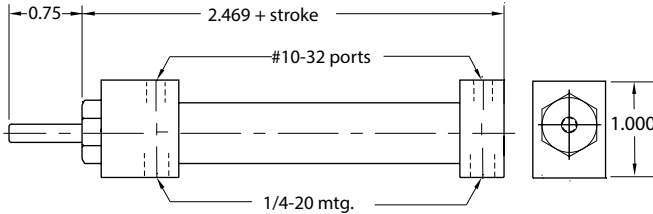
7SS-AR-1



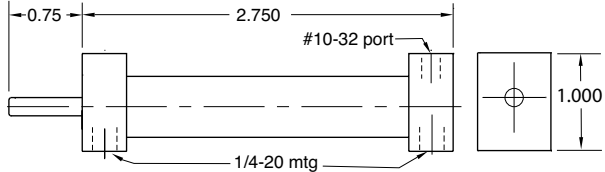
9BDD-□



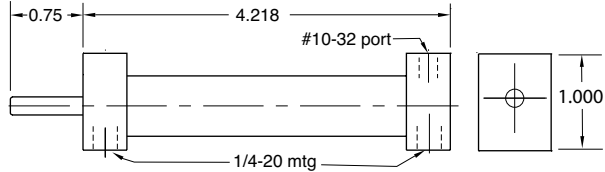
9BDS-□



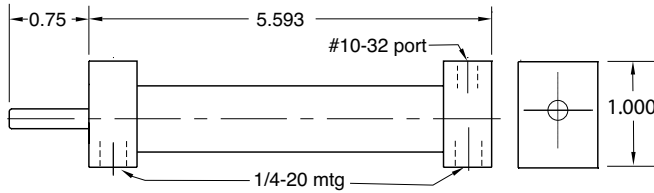
9BS-3/4



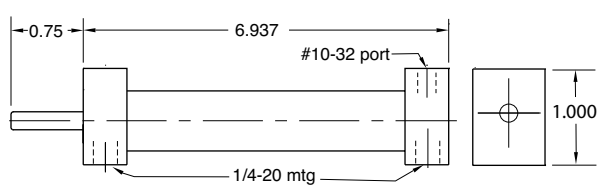
9BS-1 1/2



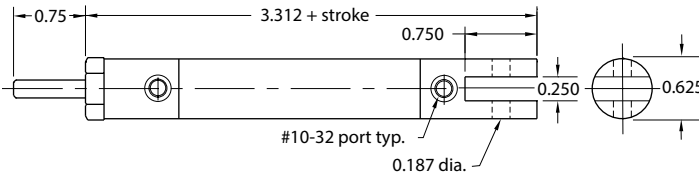
9BS-2 1/4



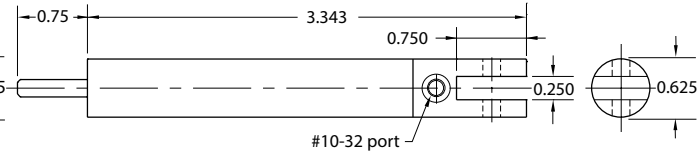
9BS-3



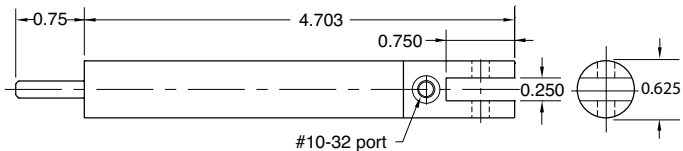
9CD-□



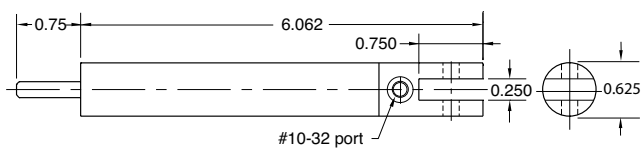
9CS-3/4



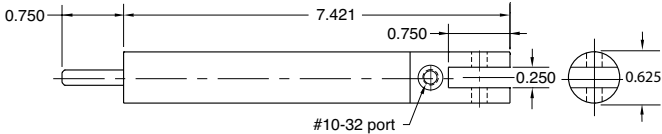
9CS-1 1/2



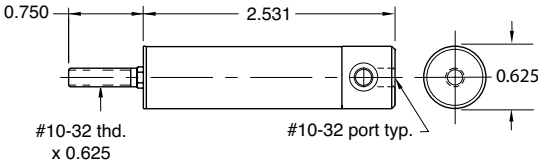
9CS-2 1/4



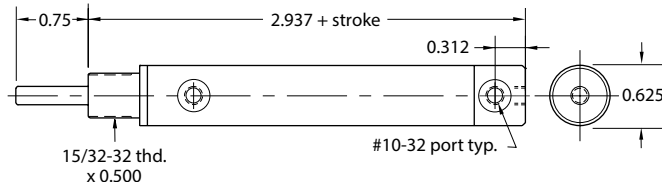
9CS-3



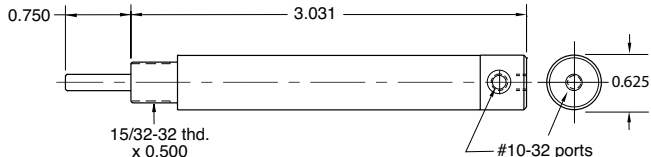
9PS-3/4



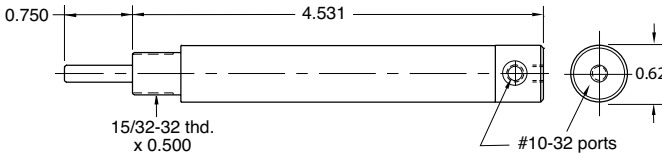
9SD-□



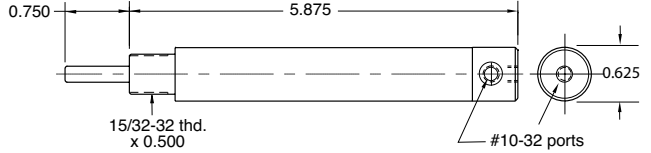
9SS-3/4



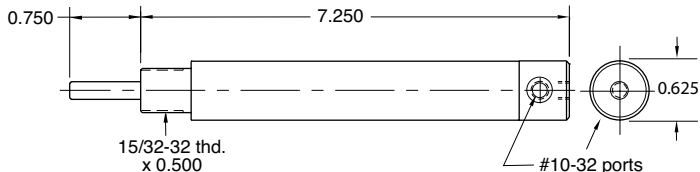
9SS-1 1/2



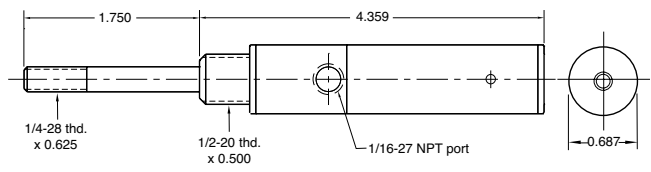
9SS-2 1/4



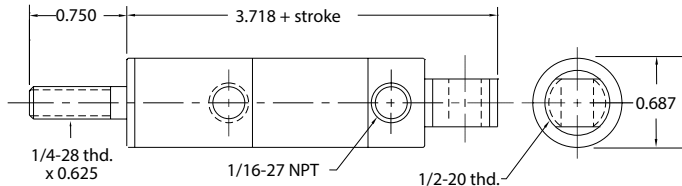
9SS-3



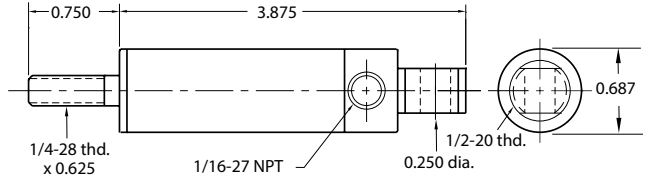
9SS-AR-1



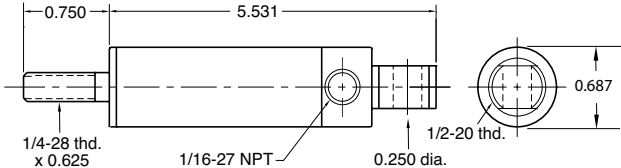
H9C-□D



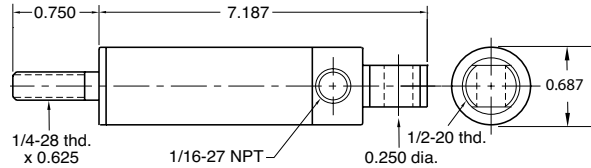
H9C-1S



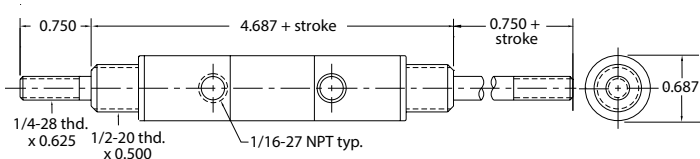
H9C-2S



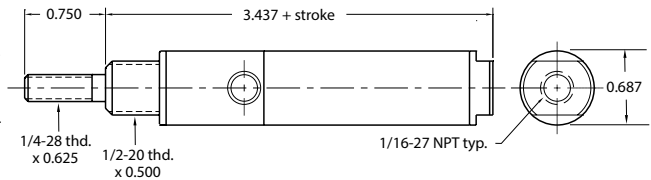
H9C-3S



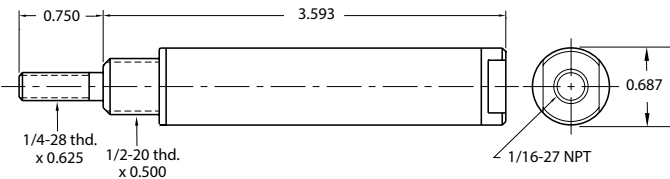
H9D-□D



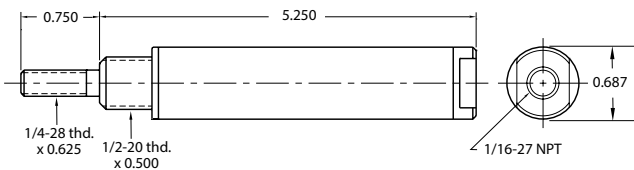
H9S-□D



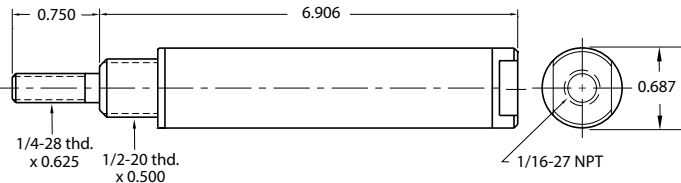
H9S-1S



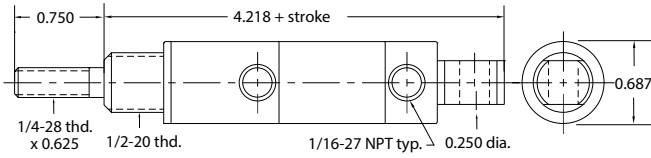
H9S-2S



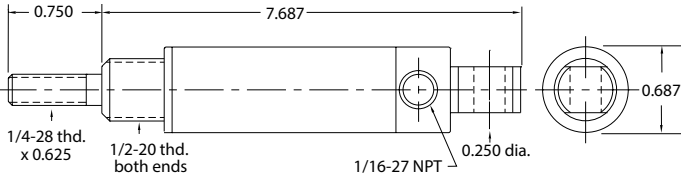
H9S-3S



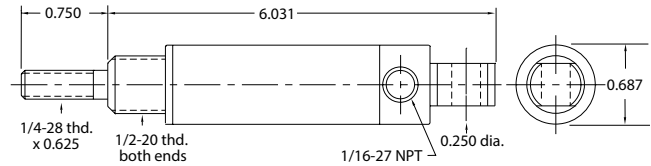
H9U-□D



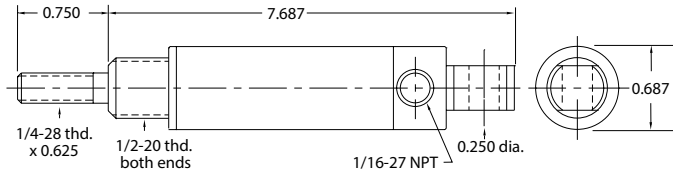
H9U-1S



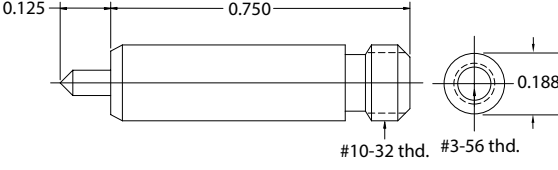
H9U-2S



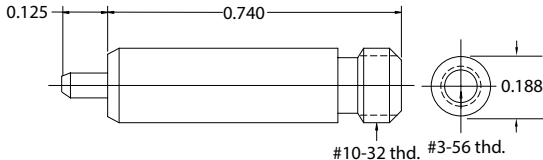
H9U-3S



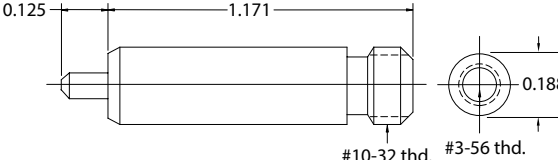
SM-2



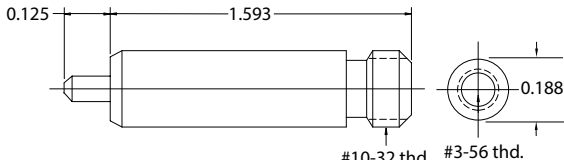
SM-3-1



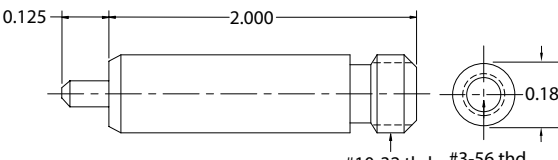
SM-3-2



SM-3-3



SM-3-4



SM-6

