



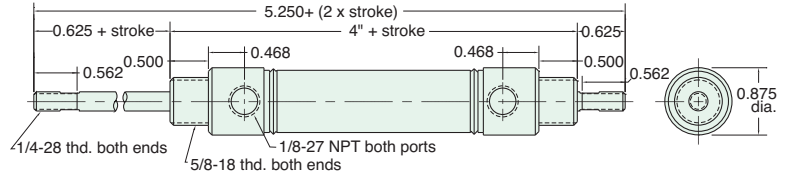
# 3/4" BORE CORROSION-RESISTANT CYLINDER

## CR-SDD-12-□-□

**Mount:** Stud  
**Type:** Double Rod

**Standard Stroke Lengths:** 1", 2", 3", 4", 5", 6"  
**Options:** M, V, N, P2, P3, P4, P5, P6, P7, P8

Double Acting



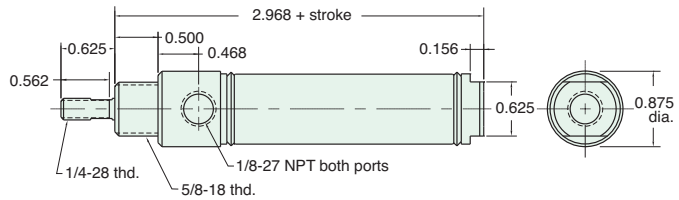
Furnished without nut(s). Order Part No. [N10-18-SS](#).

## CR-SDR-12-□-□

**Mount:** Stud  
**Type:** Rotating Rod

**Standard Stroke Lengths:** 1/2", 1", 1-1/2", 2", 3", 4", 5", 6"  
**Options:** M, V, N, P6, P7, P8

Double Acting



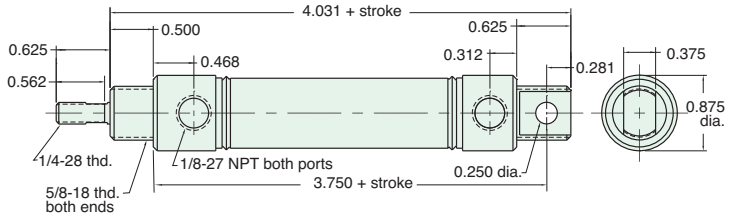
Furnished without nut(s). Order Part No. [N10-18-SS](#).

## CR-UDR-12-□-□

**Mount:** Universal  
**Type:** Rotating Rod

**Standard Stroke Lengths:** 1/2", 1", 1-1/2", 2", 3", 4", 5", 6", 8", 10", 12"  
**Options:** M, V, N, P2, P3, P4, P5, P6, P7, P8

Double Acting

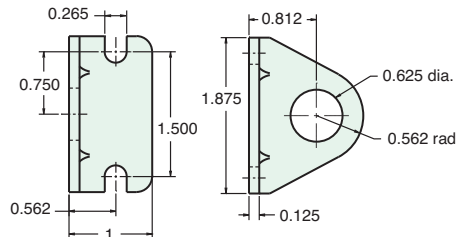


Furnished without nut(s). Order Part No. [N10-18-SS](#).

## Stainless Steel Mounting

**Foot Bracket**  
**Model Number:** [FB-1791-SS](#)

**Nut**  
**Model Number:** [N10-18-SS](#)  
**Max. Torque in lbs.:** 12



All Stainless Steel mounting accessories available on page 67.