

Clippard Cylinders Help Bring Creatures to Life!

We've all seen
them— especially
this time of year.

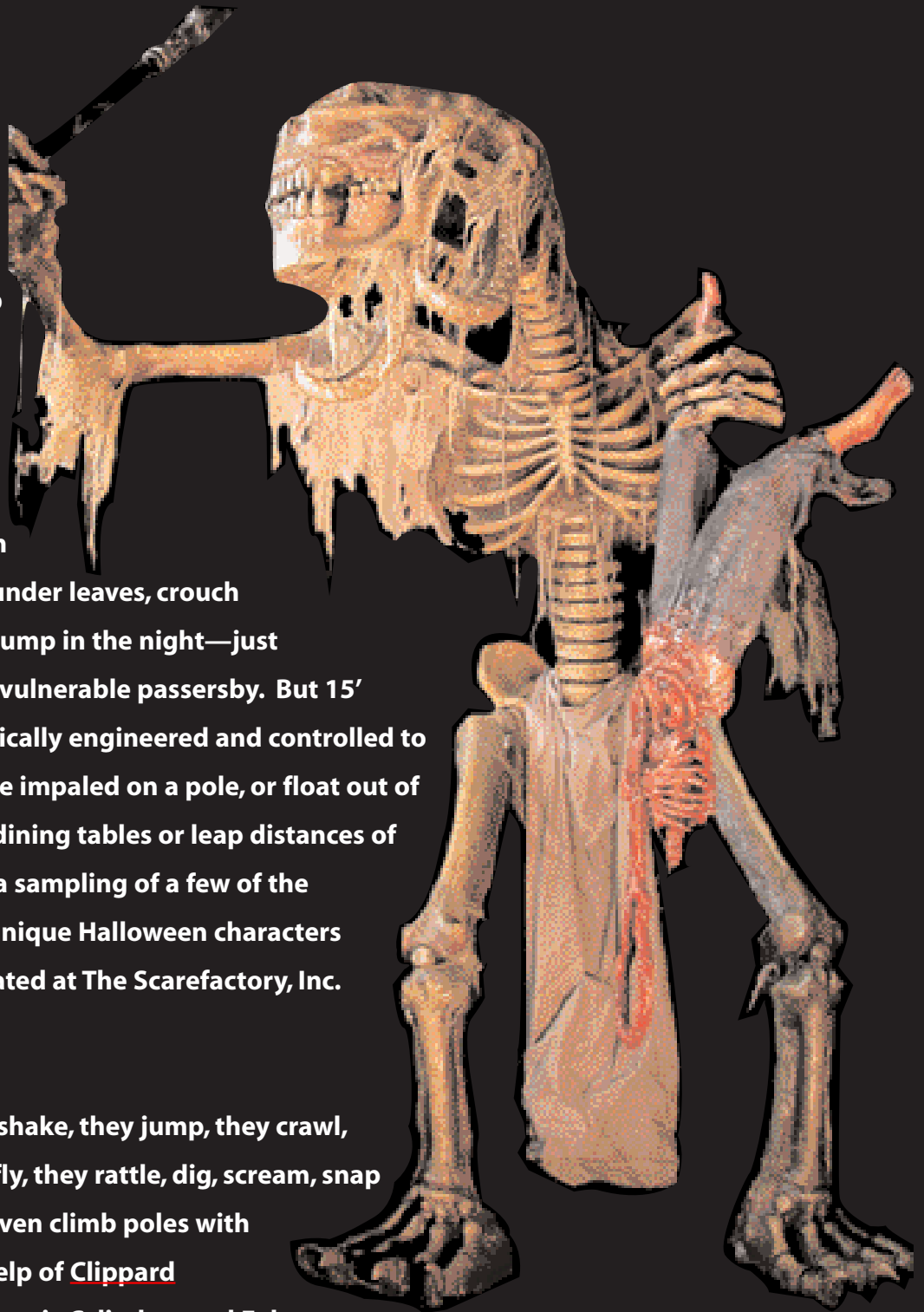
Creatures that lurk in
dark shadows, hide under leaves, crouch
behind bushes, go bump in the night—just
waiting on the most vulnerable passersby. But 15'
characters pneumatically engineered and controlled to
thrash violently while impaled on a pole, or float out of
coffins, spring from dining tables or leap distances of
16'? Well that's just a sampling of a few of the
capabilities of the unique Halloween characters
designed and fabricated at The Scarefactory, Inc.
in Columbus, Ohio!

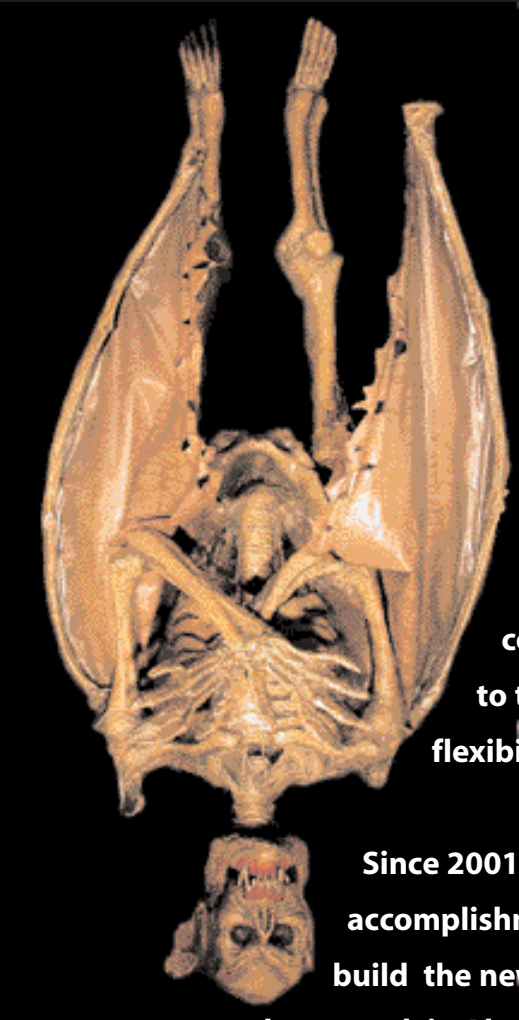


They shake, they jump, they crawl,
they fly, they rattle, dig, scream, snap
and even climb poles with
the help of Clippard

Pneumatic Cylinders and Exhaust

Valves. But Clippard only helps with the motion—it's
the creative staff at Scarefactory that really make these
animated characters seem to come to life!

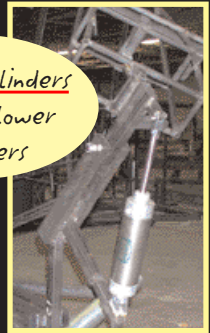




Dave Fachman, President of Scarefactory, says that although the Haunted Attraction industry has been their primary focus, they plan to expand into other markets such as the theme entertainment industry involving restaurants, parks and the motion picture business. In addition, Fachman's next challenge is to develop more life-like, fluid characters which Clippard's new EVP Proportional Flow Control Valves

could play an important role due to their high degree of control and flexibility.

Clippard cylinders raise and lower characters

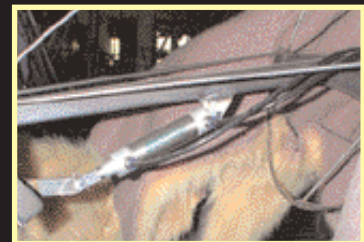


Since 2001, a few of Scarefactory's notable accomplishments includes a contract to design and build the new Haunted Hotel for Ocean Park Hong Kong, a premier water theme park in Aberdeen. In addition, the technical crew heads to the Playboy Mansion in Bel-Air, California annually to design and install a spectacular display for the mansion's Hollywood Halloween party. In all, Scarefactory provides products and services to more than 500 Haunted attractions around the world.



Scarefactory offers individual products such as costumes, still figures, animated creatures, furniture and fixtures—all handmade, expertly painted and guaranteed to amaze and entertain even the most serious novelists!

Special thanks to Dave Fachman, Wes Hilton and the rest of the staff for allowing us the opportunity to experience their unique Scarefactory!



Clippard cylinder used to operate the arms of the "Attacking Hound"



1-877-245-6247