

R-614



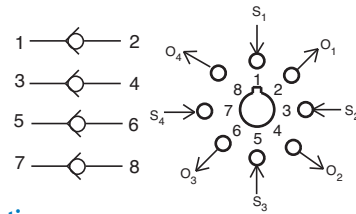
NEW! Manifold Mounted Multi Check Valve

Features:

- Efficient design
- Eight air passages extend longitudinally through the body surrounding the valve cavity integrated circuit

Performance:

Flow: 9 scfm @ 100 psig
Temperature: 32 to 180°F
Working Pressure: Vacuum to 150 psig
Cracking Pressure: 0.5 psig



Description:

The **R-614** Multi Check Valve integrates four check valves in one compact valve body. Take advantage of the many features of this versatile line including easy manifold mounted design, integrated circuitry, Octoport outlet design, maximized performance and more.

R-701



Pressure Regulator

Features:

- Multiple porting speeds piping
- Knurled knob for fast, accurate adjustments - no tools needed
- Self-relieving

Performance:

Flow: 12 scfm @ 100 psig
Temperature: 32 to 180°F
Working Pressure: 0 to 150 psig



Description:

R-701 is a self-relieving, adjustable pressure regulator with multiple output ports. Pressure can be piped directly from ports 2, 4, 6 and 8. Eliminates need for additional fittings. Unused output ports should be plugged.

R-711



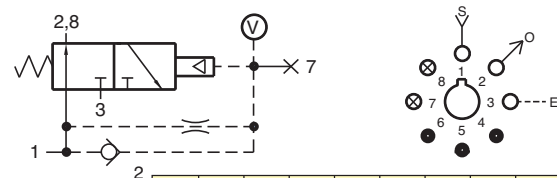
Pulse Valve

Features:

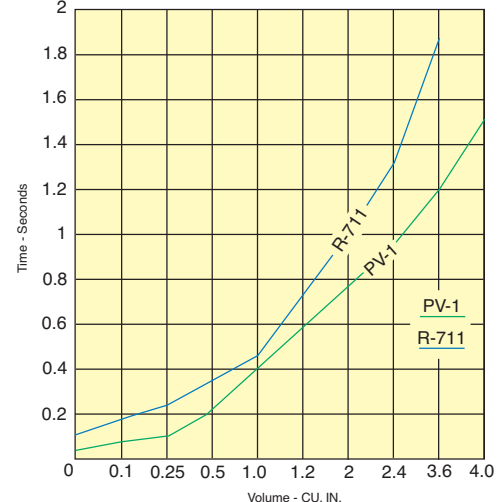
- Multiple porting speeds piping
- Micro Gap Construction - snap action and no blow by
- Complete function in one module

Performance:

Flow: 10 scfm @ 100 psig
Pilot Pressure Minimum: 40 psig
Temperature: 32 to 180°F
Working Pressure: 40 to 150 psig



Time in Seconds			Time in Seconds		
Volume	PV-1	R-711	Volume	PV-1	R-711
0	0.042	0.117	1.2	0.580	0.700
0.1	0.074	0.180	2.0	0.760	1.000
0.25	0.124	0.245	2.4	0.950	1.300
0.5	0.210	0.350	3.6	1.200	1.900
1.0	0.390	0.450	4.0	1.500	N.R.



Description:

R-711 is a 3-way, Normally-Open, self-piloted valve that closes shortly after being pressurized and remains closed until signal pressure is exhausted. It converts a continuous input signal into a single pulse of approximately 50 milliseconds. Port 7 is provided for additional volume for extending pulse duration and should be plugged if not used.