

1 1/2" BORE CORROSION-RESISTANT CYLINDER

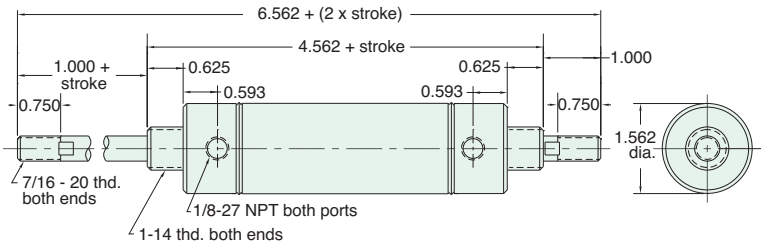


CR-SDD-24-□-□

Mount: Stud
Type: Double Rod

Standard Stroke Lengths: 1", 2", 3", 4", 5", 6", 8", 10", 12"
Options: M, V, N, P6, P7, P8

Double Acting



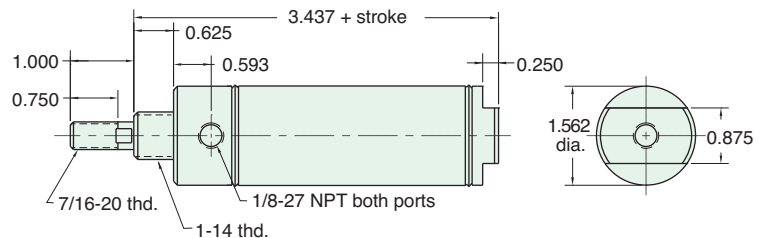
Furnished without nut(s). Order Part No. [N16-14-SS.](#)

CR-SDR-24-□-□

Mount: Stud
Type: Rotating Rod

Standard Stroke Lengths: 1/2", 1", 1-1/2", 2", 3", 4", 5", 6"
Options: M, V, N

Double Acting



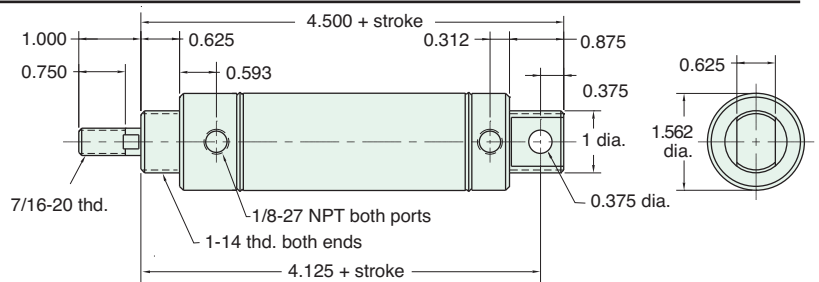
Furnished without nut(s). Order Part No. [N16-14-SS.](#)

CR-UDR-24-□-□

Mount: Universal
Type: Rotating Rod

Standard Stroke Lengths: 1/2", 1", 1-1/2", 2", 3", 4", 5", 6", 8", 10", 12"
Options: M, V, N, P2, P3, P4, P5, P6, P7, P8

Double Acting

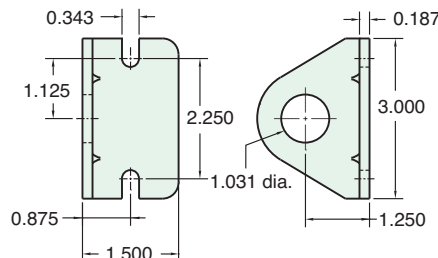


Furnished without nut(s). Order Part No. [N16-14-SS.](#)

Stainless Steel Mounting

Foot Bracket
Model Number: [FB-2891-SS](#)

Nut
Model Number: [N16-14-SS](#)
Max. Torque in lbs.: 30



All Stainless Steel mounting accessories available on page 68.